



# TECHNICAL SERVICE PARTS

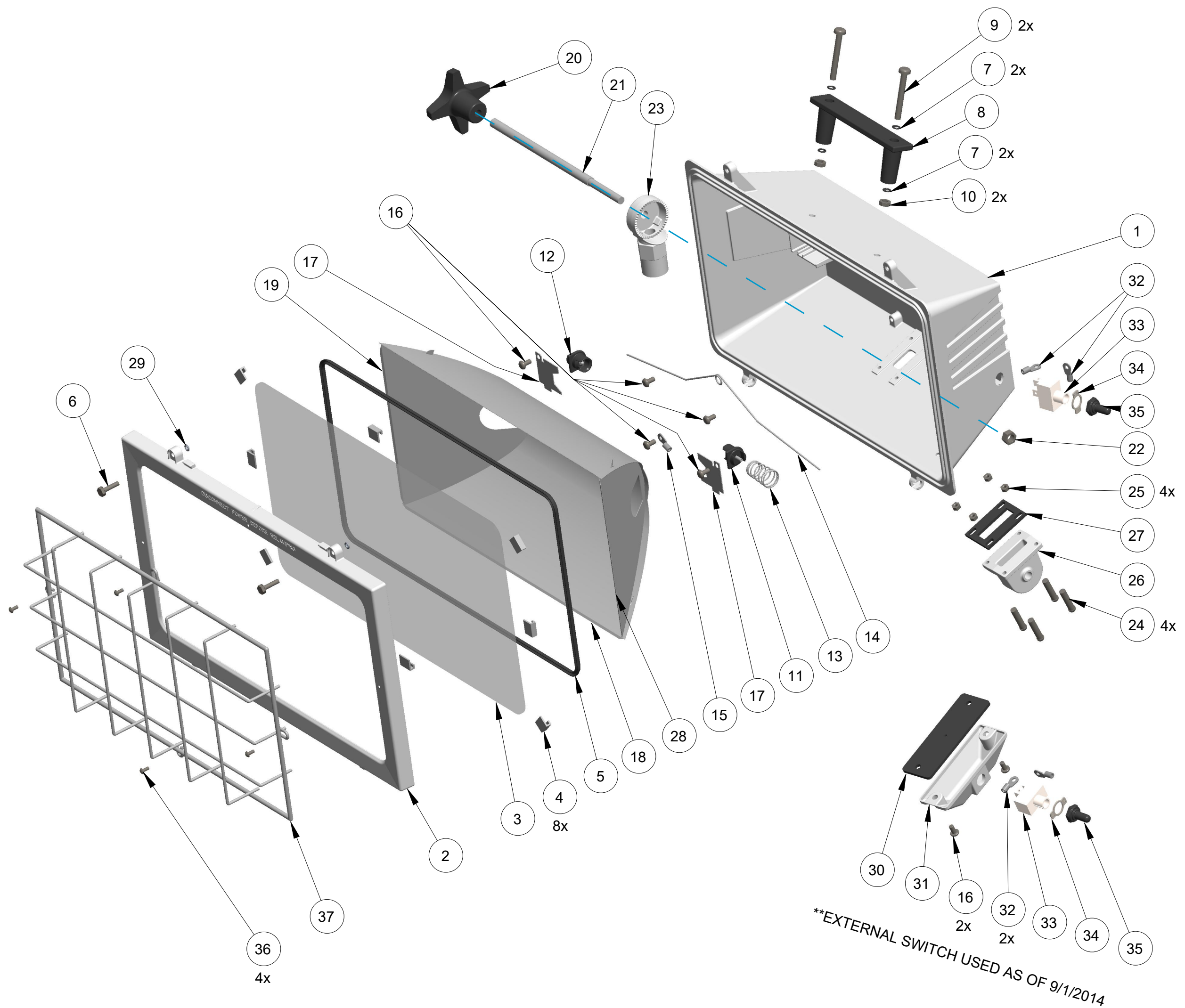
STYLE ELST-1Q  
PRODUCT ST SERIES LIGHT

IF AN ITEM IS NOTED AS "NOT FIELD REPAIRABLE", OR YOU WISH TO RETURN AN ITEM TO AKRON BRASS FOR SERVICE PLEASE GO ONLINE TO, [ONLINEREPAIR.AKRONBRASS.COM](http://ONLINEREPAIR.AKRONBRASS.COM)

Chg.	Date
01	08-14
02	04-18

Find	Description	Item	QTY	
1	A	HOUSING 1000/1500W LIGHT HEAD	560-HG-W	1
1		HOUSING 1000/1500W LIGHT HEAD WITH SWITCH HOLE	560-HG-SW-W	1
2	A	LENS FRAME, 1000/1500W LIGHT HEAD, WHT	330-FR-W	1
3		LENS FOR ST SERIES 1000/1500W LIGHT HEAD	329-LN	1
4		LENS BUMPER ST SERIES 1000/1500W	325-LB	8
5		LENS GASKET ST SERIES 1000/1500W	326-LG	1
6		SCREW LENS FRAME, 10-24, SS	VMI-566-LS	2
7		O-RING, ST SERIES	461-OR	4
8	B	BLACK HANDLE FOR STONCO (RAW PART)	301-SH	1
9	B	SCREW PHIL HEAD MACH 1/4-20 x 2" ,ZINC	VMI-317-HS	2
10	B	NUT KEP W/MOLDED LOCK WASHER 1/4-20 ZINC	VMI-318-HN	2
11	A,C	LIGHT SOCKET, 20" BLACK 16AWG UL 10362	309-LSB	1
12	A,C	LIGHT SOCKET, 20" WHITE 16AWG UL 10362	309-LSW	1
13		SOCKET SPRING	125-SP	1
14		WIRE CLIP, 1500W ST SERIES	1500-WC	1
15	C	TERMINAL, FORK 16-14, #10 NON-INSULATED	322-GWT	1
16		SCREW PHIL PAN SELF TAP 10-32 410 SS	VMI-315-RS	5
17		SOCKET COVER PLATE	525-SCP	2
18		MAIN REFLECTOR 1500W	1500-MR	1
19		SIDE RELECTOR, 1500W	1500-SR	1
20	C	HAND KNOB	120-KB	1
21		STUD, 5/16-18 x 8.375", ST1500 HEAD	132-ST	1
22	C	NUT CENTER LOCK 5/16-18 SS	VMI-321-LN	1
23	C	ST/BETA HOUSING ARM, WHT	555-HS-W	1
24	D	SCREW PHIL PAN HEAD 8-32 x 1" SS	VMI-424-JB	4
25	D	NUT W/MOLDED LOCK WASHER, 8-32, SS	VMI-632-NT	4
26	D	ST HOUSING ARM ADAPTER, WHT	564-HA-W	1
27	D	ST SERIES HOUSING ARM ADAPTER GASKET	565-GA	1
28		SIDE REFLECTOR W/WARNING 1500W	1500-SR-WARN	1
29		O-RING, ST SERIES	460-OR	2
30		SWITCH HOUSING GASKET	425-SG	1
31		SWITCH HOUSING	605-BX-W	1
32		14-16GA RING TERMINAL	347-RT	2
33		ON-OFF SWITCH	344-SW	1
34		ON-OFF SWITCH PLATE	344-SP	1
35		RUBBER SWITCH BOOT	345-SB	1
36		SCREW PHIL TYPE 23 6-32 x 5/16	VMI-339-SC	4
37		WIRE GUARD	331-WG	1
NOT SHOWN		ST SERIES LENS CLIP 1000/1500W	563-LC	4
NOT SHOWN		CONFORMING SLEEVE	347-CS	3"
NOT SHOWN	C	#18, COPPER GROUNDWIRE	323-GW	1
NOT SHOWN		FIBERGLASS HI-TEMP SLEEVE MATERIAL	748-FS	2

ELST-1Q BULBS	
ITEM	DESCRIPTION
Q1000-110CL-T3	1000W, 110V, QUARTZ T3 FLOODLAMP
Q1000-240CL-T3	1000W, 240V, QUARTZ T3 FLOODLAMP
Q1500-110CL-T3	1500W, 110V, T3 HALOGEN LAMP
Q1500-240CL-T3	1500W, 240V, T3 HALOGEN LAMP



A	1000/1500 STONCO HOUSING W/FRAME & SOCKET	325-HG
B	HANDLE ASSY, STONCO LIGHT HEAD	300-SH
C	3/4" HOUSING ARM ASSY, STONCO	311-HS
D	1000/1500W HOUSING ARM ADAPTER ASSEMBLY	326-HA

\*\*EXTERNAL SWITCH USED AS OF 9/1/2014

PHONE: 330.264.5678 or 800.228.1161 | FAX: 330.264.2944 or 800.531.7335 | [www.akronbrass.com](http://www.akronbrass.com)

**WARRANTY AND DISCLAIMER:** We warrant Akron Brass products for a period of five (5) years\* after purchase against defects in materials or workmanship. Akron Brass will repair or replace product which fails to satisfy this warranty. Repair or replacement shall be at the discretion of Akron Brass. Products must be promptly returned to Akron Brass for warranty service. We will not be responsible for: wear and tear; any improper installation, use, maintenance or storage; negligence of the owner or user; repair or modification after delivery; failure to follow our instructions or recommendations; or anything else beyond our control. WE MAKE NO WARRANTIES, EXPRESS OR IMPLIED, OTHER THAN THOSE INCLUDED IN THIS WARRANTY STATEMENT, AND WE DISCLAIM ANY IMPLIED WARRANTY OF MERCHANTABILITY OR FITNESS FOR ANY PARTICULAR PURPOSE. Further, we will not be responsible for any consequential, incidental or indirect damages (including, but not limited to, any loss of profits) from any cause whatsoever. No person has authority to change this warranty. \*Unless otherwise provided herein. Akron Brass industrial electronic components & the Severe-Duty Monitor have a one (1) year warranty. Select Akron Brass handline nozzles and valves carry a ten (10) year warranty. Scene Star Lights carry a (6) year warranty. Weldon products have a two (2) year warranty from date of manufacture (excluding consumable components). Select Weldon LED products carry a five (5) year warranty. Honda products have the manufacturers' warranty and Akron Brass disclaims any warranty in respect of those products.

Parts List Sheet:  
**ELST-1Q PARTS**