

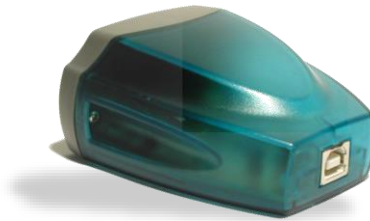
# V-MUX®

## 2000 System

### 1.0 - Preparing to work with the V-MUX system

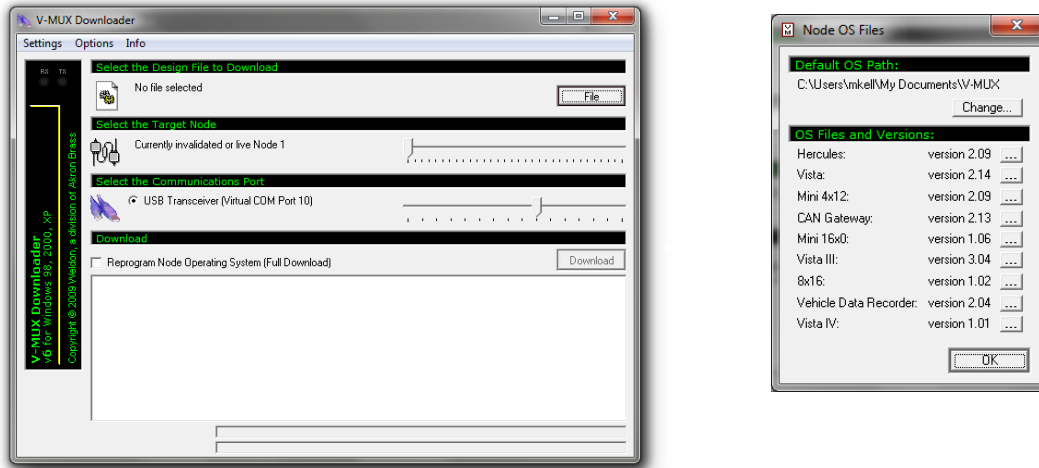
Use this V-MUX Software guide to identify what software you should install on your computer. All software listed can be found on the download page. <https://www.akronbrass.com/weldon-v-mux-downloads>

#### If you are using the V-MUX USB Transceiver



You will need to install the V-MUX USB Transceiver drivers. To watch a tutorial on installing the drivers go [HERE](#).

## 2.0 - Loading binary files onto new or installed nodes

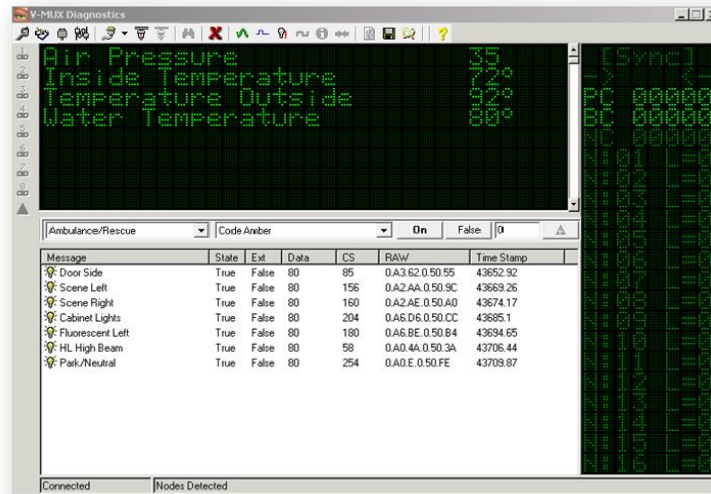


All nodes can be loaded using the V-MUX Downloader, this software requires the node OS files to be downloaded and placed in the correct folder on your computer for it to work properly. To watch a tutorial about installing and using V-MUX Downloader go [HERE](#).

### 2.1 - Other Download options

If the truck is a 2017 or newer and has Vista IV screens in it you can also load the nodes from the USB port on the VISTA IV. First move the binary files the OEM sent you onto a flash drive and insert the flash drive into the Vista IV while the system is on and you will be prompted with a download menu that you can download any node from. Please note it may require the OS file be on the flash drive as well, they can be found on the download page.

### 3.0 - Troubleshooting a V-MUX Truck



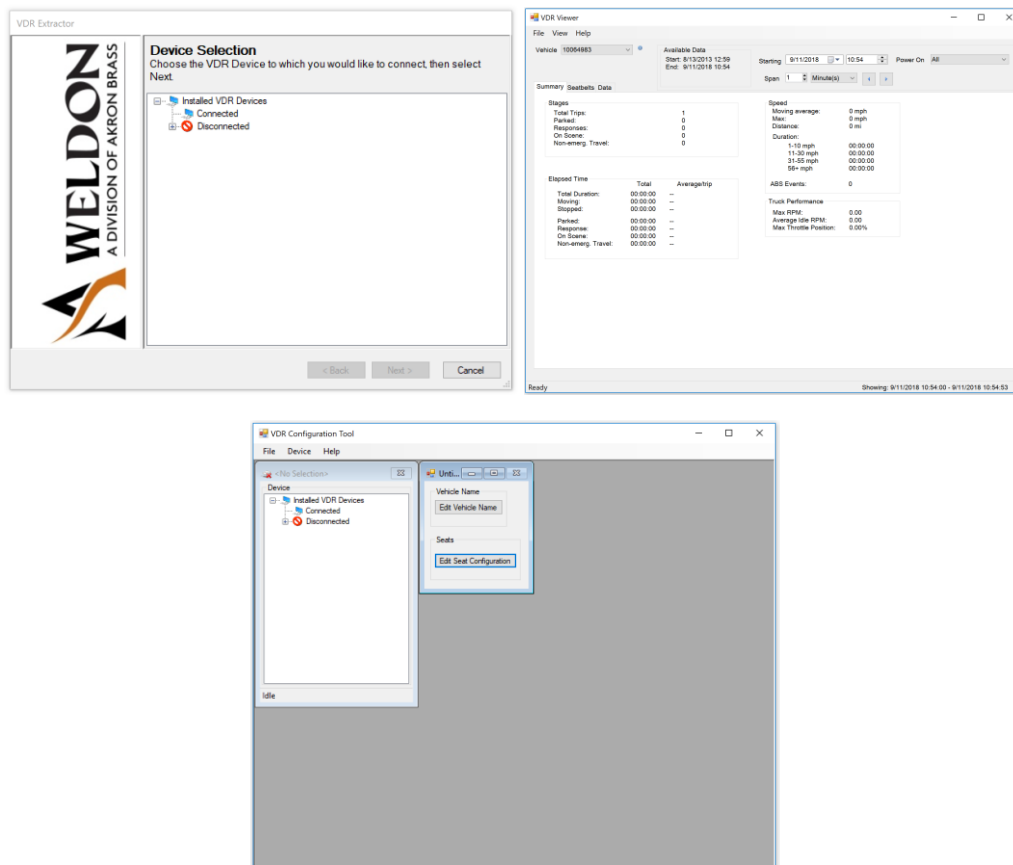
To view network information on the V-MUX network you will need to install V-MUX Diagnostics. The diagnostics software allows you to see the status of inputs, outputs and send commands to simulate the truck in different operating conditions. It's best to use V-MUX diagnostics in conjunction with the OEM wiring diagrams and V-MUX Relationship report. There are several tutorials on using the software;

[Basics 01 - Connecting](#)

[Basics 02 - Reading Data](#)

[Basics 03 - Sending Data](#)

## 4.0 - Getting Data from a VDR or Changing Seat/Belt polarity



There is only 1 installer for all 3 VDR applications. This one install will includes;

- VDR Extractor – Used to copy the memory of a VDR to a PC
- VDR Viewer – Used to View copied VDR data and to export it
- VDR Configurator – Used to alter polarity and Normally Open/Closed on seat belt and buckle inputs.

A tutorial on installing this and using the Extractor and Viewer can be found [HERE](#).