

HALE Qmax Features and Benefits



Qmax is a the best selling vehicle mounted fire pump model in the world
Qmax is available in 1000 to 2250 GPM NFPA 1901 ratings

| FEATURES | BENEFIT |
|--|---|
| High lift capacity, 25 feet plus at 750 GPM | |
| One piece body across chassis Pump fits easily in a 42" long pump box | <i>No body connections to loosen due to vibration or break due to twisting. Body acts as an extra cross member</i> |
| Horizontally split body design | <i>Allows pump rebuilding without removing pump body and plumbing</i> |
| 10.5" dia. double suction bronze impeller design | <i>Maximizes life, power efficiency and flow. Dynamically balanced. Up to 3000 GPM from hydrant with sufficient HP</i> |
| Autolube | <i>Allows our design to have only one packing gland or seal greatly simplifying service/repair problems</i> |
| Sealing | <i>Mechanical seal or packing available</i> |
| Double cut waterway | <i>Reduces load on pump shaft and allows for a smooth water flow into discharge top passages.</i> |
| 17-4PH Stainless Steel pump shaft | <i>Best grade stainless steel available, extra cost on some others</i> |
| Wrap around clearance rings | <i>Improves power and hydraulic efficiency</i> |
| Direct rear tank to pump line connection with built in check valve | <i>Straight connection to tank, 4" line up to 1100 GPM; 3" line up to 700 GPM</i> |
| Second tank to pump line available | |
| Direct discharge ports; 2 to 5 2433 4" ports and 7 to 14 115 3" ports | <i>Maximizes flow to each apparatus discharge line, low loose set up. Allows for lower operating pressure and lower engine RPM. Simplifies plumbing layout. 115 3" ports flow up to 1500 GPM and 2433 4" ports up to 2600 GPM</i> |
| 5" or 6" front suction ports available | |
| Direct 5" or 6" suction port available | <i>Hale is more direct than others</i> |
| Gear box availability | <i>G box in S (short), L (long) and X (Extra Long) K Box in L (long) and X (Extra Long) U direct drive, no gearbox mounted RG box, ahead of pump body, for short WB/CA chassis</i> |
| CAFSPRO available | |
| Hale accessories designed to work with pumps | |
| Choice of 5 year parts only warranty or 2 year parts and labor warranty | <i>Other manufacturers do not offer choices</i> |

Basic pump shipping info (less packaging): 80" x 34" x 34"; 1270 pounds

Qmax = Waterous CSUY or CSUC10; Darley LDM (max out at 1750)

Qmid = Waterous CSY or CSC10; Darley LDM

Qtwo = Waterous CMUY or CMUC10; Darley EM

Options

VPS Air shift

Handcounter readout

Mechanical seal IPO packing

Semi-automatic priming valve

Power transfer (Qtwo only)

Side suction tubes 4-1/2", 5", or 6" NH

Manual shift override kits

Gear ratios to fit all applications

ESP 12 or 24V priming

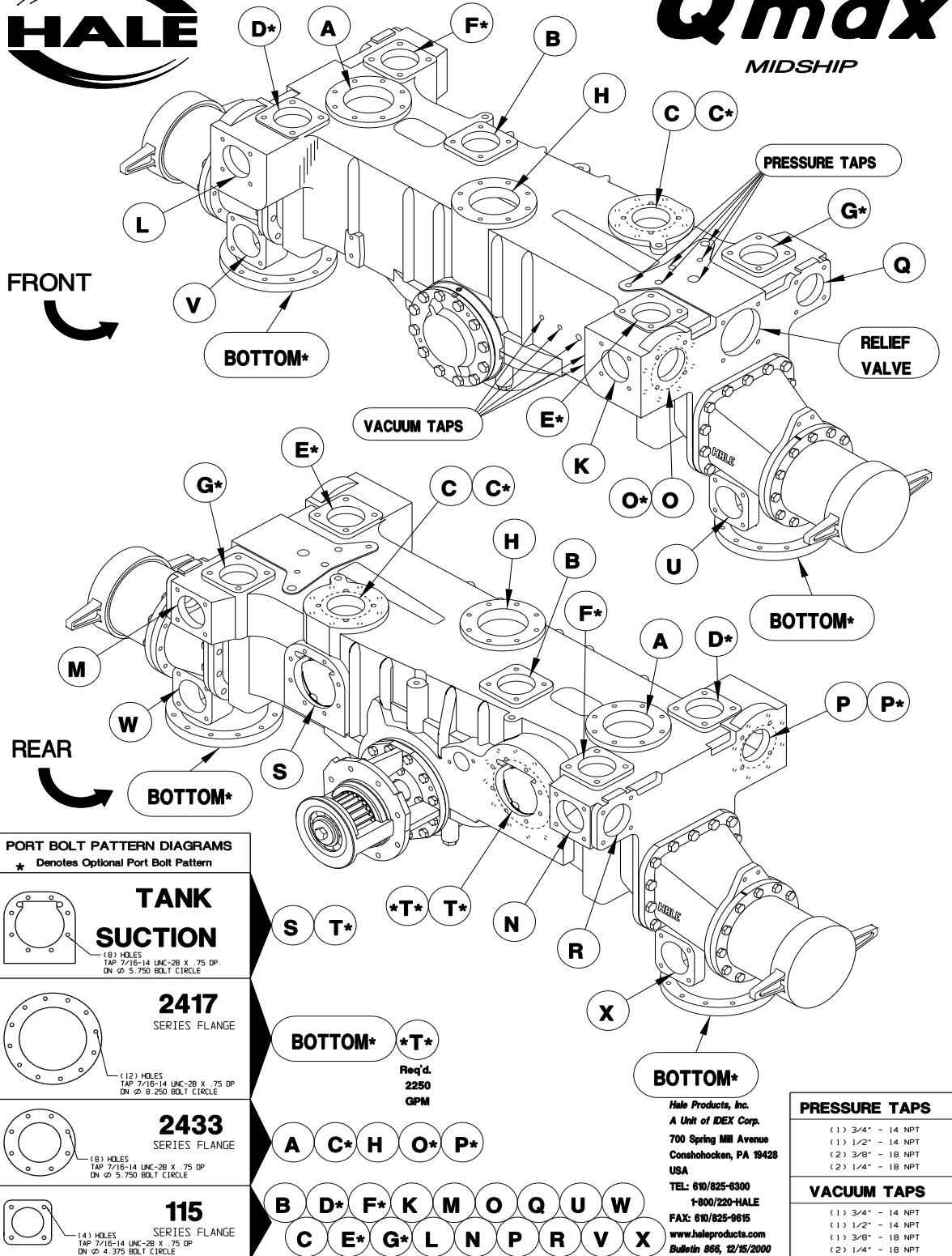
QD/QG/TPM/Governor pressure control

Side suction inlet MIV-M or MIV-E

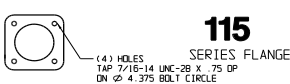
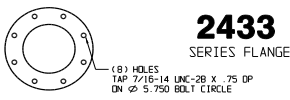
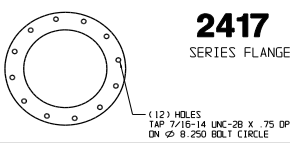
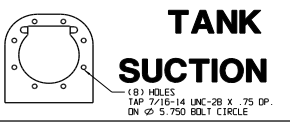


PORT DIAGRAMS

Qmax
MIDSHIP



PORT BOLT PATTERN DIAGRAMS
* Denotes Optional Port Bolt Pattern



S T*

BOTTOM* *T*
Req'd.
2250
GPM

A C* H O* P*

B D* F* K M O Q U W
C E* G* L N P R V X

Hale Products, Inc.
A Unit of IDEX Corp.
700 Spring Mill Avenue
Conshohocken, PA 19428
USA
TEL: 610/825-6300
1-800/220-HALE
FAX: 610/825-9615
www.haleproducts.com
Bulletin 866, 12/15/2000

| PRESSURE TAPS | |
|---------------|---------------|
| (1) | 3/4" - 14 NPT |
| (1) | 1/2" - 14 NPT |
| (2) | 3/8" - 18 NPT |
| (2) | 1/4" - 18 NPT |
| VACUUM TAPS | |
| (1) | 3/4" - 14 NPT |
| (1) | 1/2" - 14 NPT |
| (1) | 3/8" - 18 NPT |
| (2) | 1/4" - 18 NPT |

Options

Tank Suction: Check valve, blank flange, 2-12" to 4" NPTF Flange, 2-1/2" to 4" NPTF 4 degree flange

115 Ports: Blank flange, 1-1/4" to 3" NPTF flange, 2-1/2" or 3" NPTF 4 degree flange, zinc anode w/flange. Magnesium anode w/ flange, TRV or TRV-L w/flange, valve base adapters to fit 1-1/2" to 3" Hale/Akron/Eikhart valve bodies.

2433 Ports: Blank flange, 2-1/2" to 4" NPTF flange, 2-1/2" or 4" NPTF 4 degree flange, valve end to fit 2-1/2" or 3" Hale/Akron/Eikhart valve bodies, Hale valve end 4"

2417 Port: MIV-M or MIV-E, 6" NPTF Flange, 5" or 6" Victaulic adapter, 5" or 6" victaulic 4 degree adapter.