



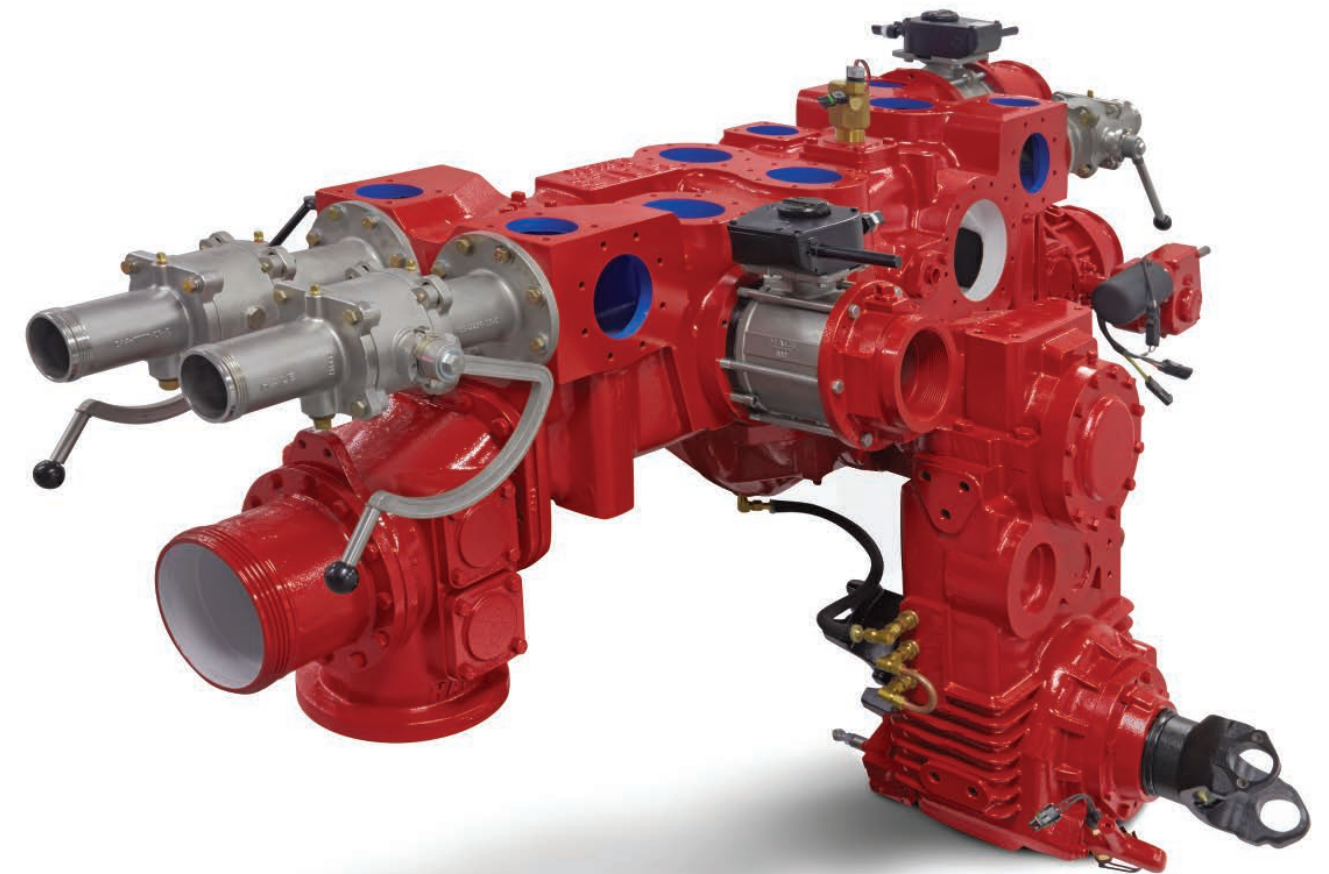
Qmax-XS

Qmax-XS NFPA-Rated Pump Performance		
Qmax-XS 100	1000 GPM @ 150 PSI	3785 LPM @ 10.3 BAR
Qmax-XS 125	1250 GPM @ 150 PSI	4732 LPM @ 10.3 BAR
Qmax-XS 150	1500 GPM @ 150 PSI	5678 LPM @ 10.3 BAR
Qmax-XS 200	2000 GPM @ 150 PSI	7570 LPM @ 10.3 BAR
Qmax-XS 225	2250 GPM @ 150 PSI	8515 LPM @ 10.3 BAR

Heavy Duty Gear Box Options

The Hale G-Style Gearbox with hardened chrome nickel steel precision ground gears is standard. It includes dual switch indicators for lights and safety interlocks. It is available in several ratios that are compatible with the most popular engine and transmission combinations to ensure maximum performance, and features a 16,000 ft.lb. drive-through torque rating.

The Hale K-Style Gearbox, capable of 18,500 ft.lb. drive-through torque, is designed and built for high mileage and power requirements. The K Gearbox is ideal for refineries, petro-chemical facilities and large cities with big drive-through torque requirements and apparatus with engines up to 550 HP.



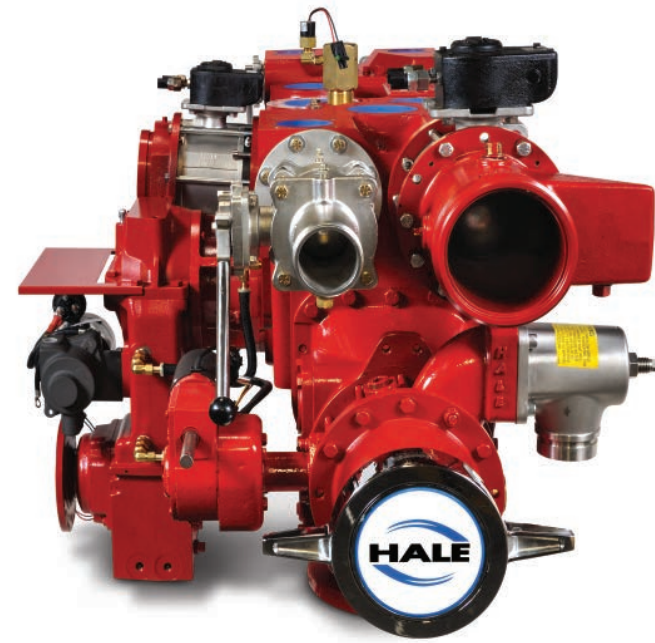
Superior Performance. Reliability. Innovation.

Hale's Qmax-XS pump's high water delivery rate to knock down large fires, proven reliability based on the impressive track record of the Qmax pump, and small, innovative design gives your department all that it is looking for in a pump.



Superior Performance

- The Hale Qmax-XS single-stage midship pump generates NFPA 1901 rated flows up to 2,250 GPM. It has been designed to go beyond the NFPA rating of 2,250 and exceed 3,000 GPM from a sufficient positive pressure water source along with an appropriate engine.
- The large suction inlets and full-flow waterways cut friction loss and deliver maximum pressure at discharge valves.
- The standard twelve, four-inch discharge ports are each designed to flow in excess of 1,500 GPM with low pressure drop.
- The 3-inch tank-to-pump connection is designed to provide flows up to 600 GPM, and a 4-inch valve will flow 1,100 GPM.
- Right and left side, large 6" diameter suction inlets deliver pump capacities beyond NFPA 1901 standard ratings.



Innovation

- The Hale Qmax-XS pump's innovative one-piece compact body profile design minimizes piping requirements and leaves more room for storage compartment space on your apparatus.
- Even with its big water muscle, the Qmax-XS pump's sleek design allows it to be installed in a pump module as small as 34 inches wide with manual valves or 28 inches wide with electric valves.

Reliability

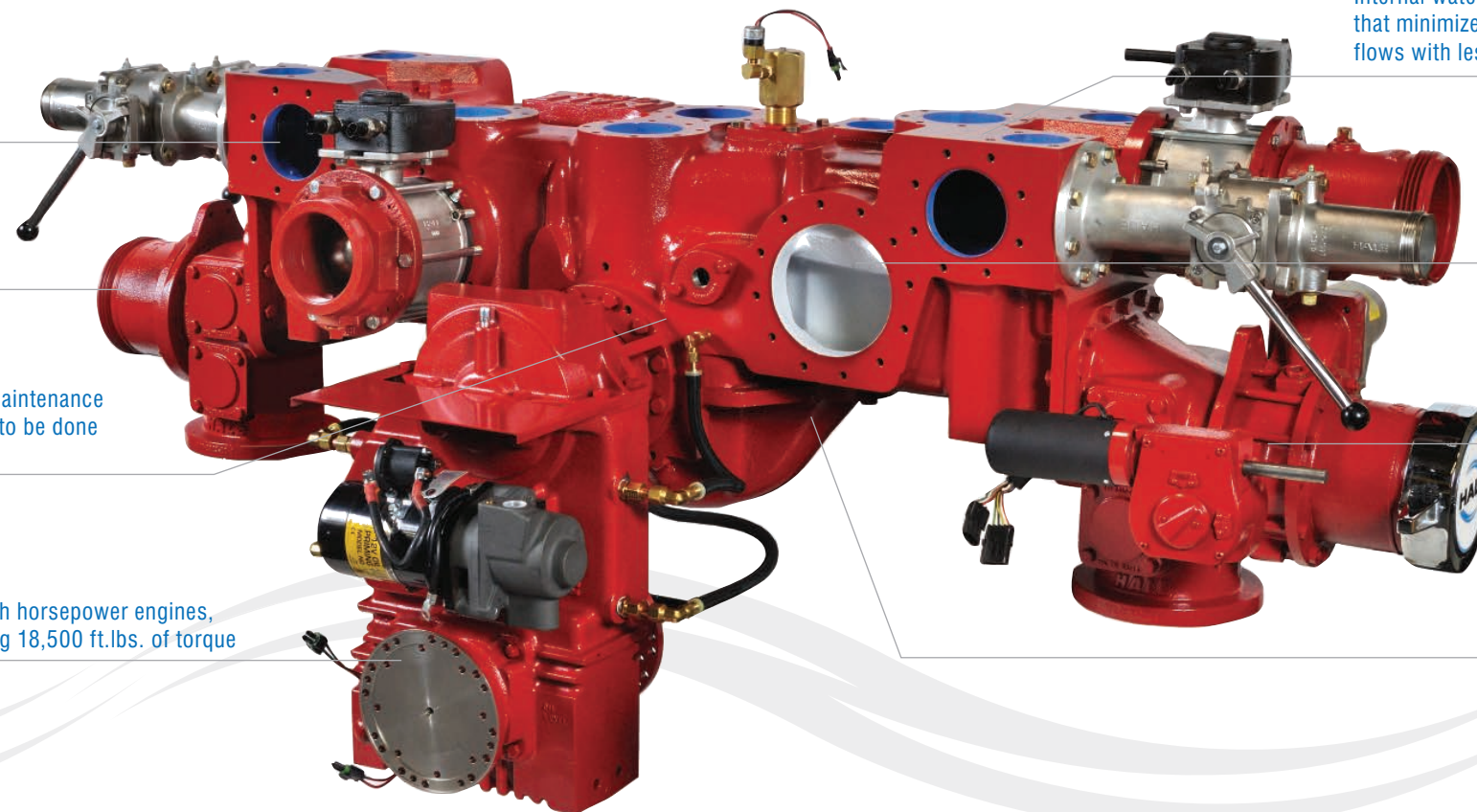
- A one-piece upper pump body minimizes potential piping leaks and makes maintenance and service easy.
- The Qmax-XS hydraulics are based on the time-tested and field-proven Qmax pump, the bestselling single-stage pump in North America.
- Its double suction impeller with dual cutwater design minimizes shaft loading for long life while increasing suction performance and efficiency.
- The pump shaft is supported close to the impeller to minimize shaft deflection. Decreased shaft deflection reduces wear on the shaft, impeller, clearance rings and bearings.
- The Auto-Lube is an impeller shaft sleeve bearing system that automatically lubricates itself with oil plus seals out dirt and water. This puts the safest, most rugged type of "extended life" bearing right in the center of the pump, next to the impeller, where it provides maximum benefit.

12 standard 4" ports minimize plumbing requirements while flowing in excess of 1500 GPM

Large suction inlets for performance beyond NFPA

Horizontally split body makes maintenance easy and allows for pump work to be done without disturbing plumbing

Gearboxes built for high horsepower engines, capable of withstanding 18,500 ft.lbs. of torque



Internal waterways include 180° cutwater that minimizes internal plumbing for higher flows with less pressure loss

Optional front and rear intakes allow for better incoming water flow with fewer elbows

Manual intake valves with true 6" inlet allow for single hose 1500 GPM rating

Single-piece body minimizes chances of leaks while maximizing water flow