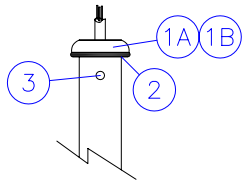


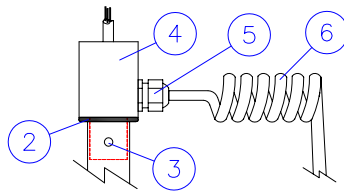
## PULL-UP POLE ASSEMBLY

### POLE TOPS

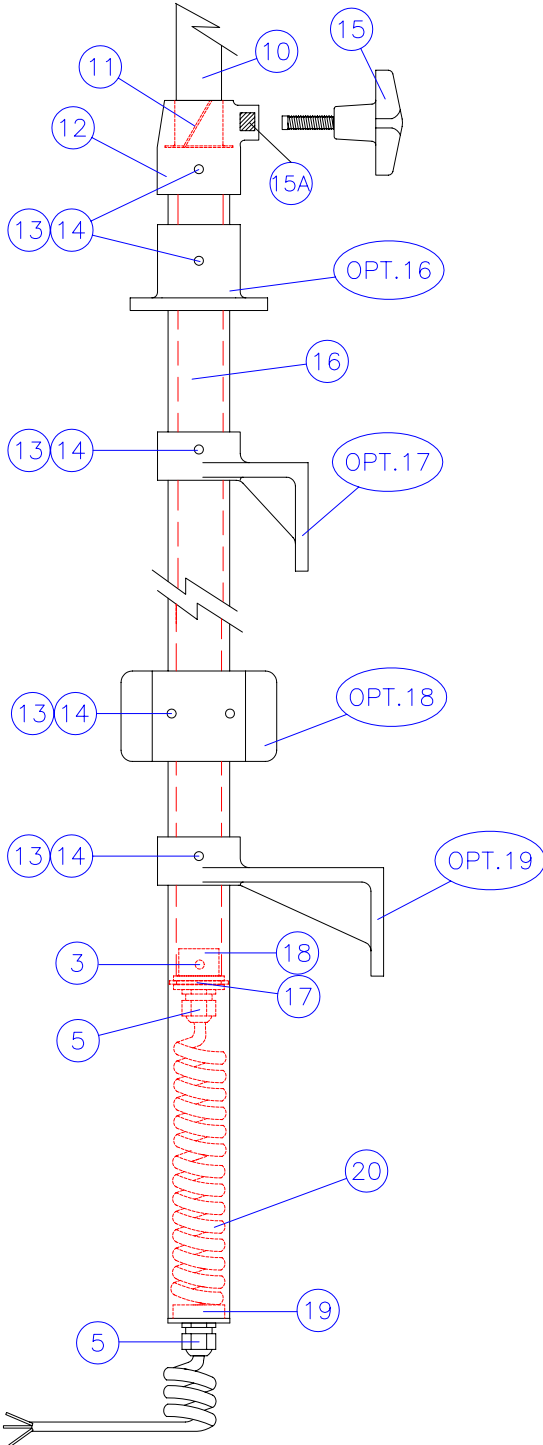
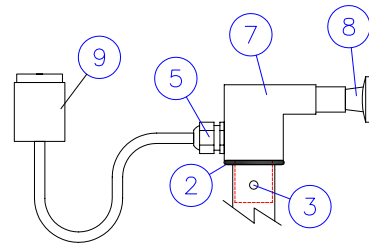
#### STANDARD



#### WIRE-OUT TOP



#### PL - POLE MOUNT



#### PARTS LIST

NO.	PART NO.	DESCRIPTION	QTY.
1A	101-TB	1/2" TOP BUSHING -NS	1
1B	103-TB	3/4" TOP BUSHING -STONCO	1
2	120-OR	O-RING SEAL	1
3	124-SS	1/4-20 x 1/4 SETSCREW	2
4	212-TB	WIRE-OUT TOP BUSHING	1
5	127-SR	1/2" STRAIN RELIEF	1
6	481-CC	WIRE-OUT TOP COIL CORD	1
7	212-PMA	PL-POLE MOUNT	1
8	220-SPA	SPRING PIN ASSEMBLY	1
9	213-CN	L5-15 CONNECTOR - STD.	1
10	EP-125-48	48" Ø1.25 POLE - STD.	1
11	126-NS	NYLON SLEEVE	1
12	LC	LOCKING COLLAR INCLUDES P/N's 11, 13, 14, 15 & 15A	1
13	125-SS	1/4-20 x 5/16 SETSCREW	2/3
14	128-SS	1/4-20 x 1/4 COIL INSERT	2/3
15	120-KB	LOCKING COLLAR KNOB	1
15A	123-SP	LOCKING PUCK	1
16	EP-171-58	58" Ø1.71 POLE - STD.	1
17	312-AC	AIR CUSHION RING	1
18	102-IBB	INSIDE POLE BUSHING	1
19	105-ORB	OUTSIDE POLE BUSHING	1
20	480-CC	48" COIL CORD	1

#### OPTIONS

OPT.16	TM	TOP MOUNT BRACKET	1
OPT.17	SM2	2" OFFSET SIDE MOUNT	2
OPT.18	FM	FLUSH MOUNT BRACKET	2
OPT.19	SM4	4" OFFSET SIDE MOUNT	2

#### NOTES:

FOR INSIDE POLES, RANGE IS 18" TO 48". - ITEM NO.10  
FOR OUTER POLES, RANGE IS 28" TO 58". - ITEM NO.18

WITH OPT.16 YOU MIGHT NEED EITHER OPT.17 OR  
OPT.19 TO HOLD THE BOTTOM OF THE POLE FIRMLY.

ISO-9001 CERTIFIED



Akron Brass Company  
A Premier Farnell Company

501 N. Cummings Lane, Washington, IL 61571  
Phone: (309)444-4440 Fax: (309)444-8766