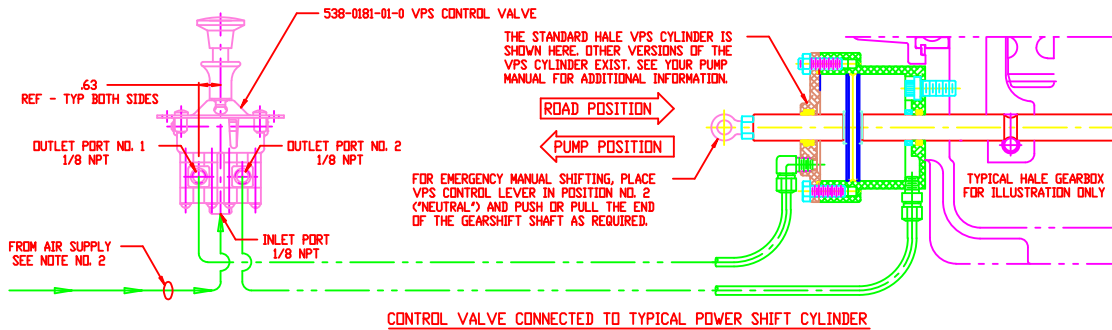


HALE VPS CONTROL VALVE ASSEMBLY

PART NO. 538-0180-00-0 - PLATE NO. 595

| HALE PART NO. | QTY. | DESCRIPTION |
|---------------|------|--|
| 538-0181-01-0 | 1 | CONTROL VALVE |
| 101-0072-00-0 | 1 | INSTRUCTION PLATE |
| 018-1205-44-0 | 4 | MACHINE SCREW - 1/4-20 X 5/8 LONG PHILLIPS ROUND-HEAD STAINLESS STEEL |
| 110-1200-02-0 | 4 | NUT - 1/4-20 ZINC PLATED STEEL HEX |
| 546-00011-000 | 1 | GREEN IND LED ASSY KIT 12/24V (NOT INCLUDED) ① |



- NOTES**
- TUBING FROM VPS CONTROL VALVE TO VPS CYLINDER IS PROVIDED BY THE INSTALLER. 1/4-INCH AIR BRAKE TUBING IS TYPICAL FOR MOST APPLICATIONS.
 - CONTROL VALVE IS RATED FOR 150 PSI MAXIMUM INLET PRESSURE. MINIMUM INLET SUPPLY OF 4-5 SCFM @ 15-20 PSI OF CLEAN, DRY AIR NEEDED AT VPS CYLINDER FOR PROPER AND RELIABLE OPERATION OF THE VPS SYSTEM. DO NOT USE FOR VACUUM APPLICATIONS.
 - CONTROL VALVE REQUIRES PERIODIC INSPECTION AND SERVICING. SEE HALE DRAWING NO. 101-0050-03-0 - MAINTENANCE AND REPAIR OF VPS CONTROL VALVE, FOR MORE INFORMATION.
 - FOR OPTIMUM PERFORMANCE AND SERVICE LIFE THE VPS CYLINDER SHOULD BE LUBRICATED APPROXIMATELY ONCE A YEAR. DISCONNECT BOTH AIR LINES AND ADD SEVERAL DROPS OF PNEUMATIC TOOL OIL, VACUUM CYLINDER OIL, OR SIMILAR LUBRICANT.

SEE HALE PLATE NO. 533 - HALE TYPE VPS POWER SHIFT, FOR THE PARTS LIST FOR THE STANDARD VPS CYLINDER. A CYLINDER REPAIR KIT IS AVAILABLE UNDER HALE PART NO. 546-0370-51-0.
 - SEE HALE PLATE 746 - WIRING SCHEMATIC FOR SHIFT INDICATOR LIGHTS. FOR MORE INFORMATION REGARDING THE SHIFT INDICATOR SWITCHES, LIGHTS, WIRING AND INSTALLATION.
 - VALVE CAN BE MOUNTED 180° FROM POSITION SHOWN, I.E. OUTLET PORTS FACING INDICATOR LIGHT, AS REQUIRED FOR INSTALLATION. CYLINDER CONNECTIONS TO PORT NO. 1 AND 2 WILL BE REVERSED.

WARNING ALL WIRING AND INSTALLATION DETAILS MUST CONFORM TO ALL APPLICABLE NFPA, SAE, AND DOT STANDARDS
VERIFY OPERATION OF PUMP ENGAGED INDICATOR LIGHTS AND ALL INTERLOCKS BEFORE PLACING APPARATUS IN SERVICE

OPERATION

WITH CONTROL LEVER IN POSITION NO. 1
SUPPLY PRESSURE IS DIRECTED TO PORT NO. 2
PORT NO. 1 IS EXHAUSTED TO ATMOSPHERE

WITH CONTROL LEVER IN POSITION NO. 2
SUPPLY PRESSURE IS CLOSED OFF (NEUTRAL POSITION)
PORTS NO. 1 AND 2 ARE BOTH EXHAUSTED TO ATMOSPHERE

WITH CONTROL LEVER IN POSITION NO. 3
SUPPLY PRESSURE IS DIRECTED TO PORT NO. 1
PORT NO. 2 IS EXHAUSTED TO ATMOSPHERE

DO NOT USE THIS VALVE FOR VACUUM APPLICATIONS

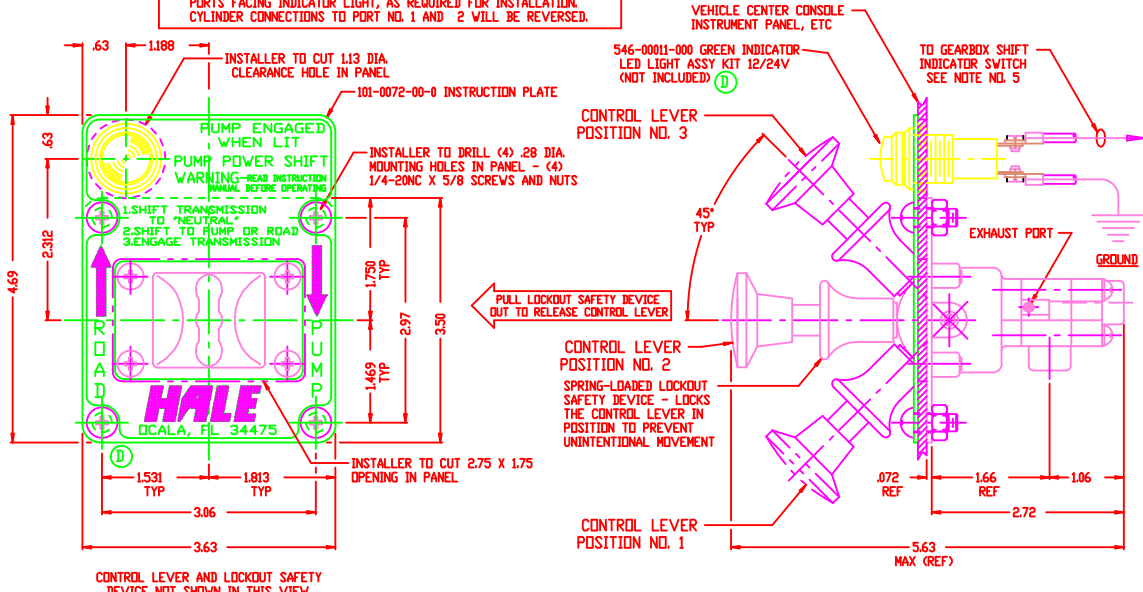


PLATE NO. 595

| ECN NO. | REV | CHANGED FROM | BY | DATE | APVD | HALE | HALE PRODUCTS, INC. A Unit of IDEX Corporation Ocala, FL 34475 USA |
|---------|-----|---|-----|----------|------|---|--|
| 97-124 | B | REDREW IN CAD FORMAT - ADDED "DO NOT USE THIS VALVE FOR VACUUM APPLICATIONS" NOTE | AJD | 08-06-97 | RET | COPYRIGHT © HALE PRODUCTS, INC. Ocala, FL 34475 USA | DRAWN: AJD DATE: 8-6-97 DWG. SIZE: A CHECKED: RET SCALE: 1/2=1 SHEET 1 OF 1 |
| 0964 | C | ADDED AIR SUPPLY REQUIREMENT | JRP | 03-22-10 | PRV | | |
| 4398 | D | INCORRECT LIGHT KIT AND PLANT LOCATION | DMB | 04-03-18 | JLS | | |