

COMPLIANCE NOTE:
15 CFR 758.6 These items are controlled by the U.S. Government and authorized for export only to the country of ultimate destination for use by the ultimate consignee or end-user(s) herein identified. They may not be resold, transferred, or otherwise disposed of, to any other country or to any person other than the authorized ultimate consignee or end-user(s), either in their original form or after being incorporated into other items, without first obtaining approval from the U.S. government or as otherwise authorized by U.S. law and regulations the term 'authorized' includes exports, reexports and transfers (in-country) designated under No License Required (NLR). These drawings are trademarks and copy written intellectual property of IDEX and its subsidiaries, and may not be reproduced or replicated without the express written permission of IDEX corp.

THIS PRODUCT AND ITS COMPONENTS ARE PROTECTED BY ONE OR MORE OF THE FOLLOWING U.S. PATENTS AND THE OTHER PATENTS PENDING.

3,116,694 4,089,345
3,918,681 4,311,440
4,024,886 4,653,978

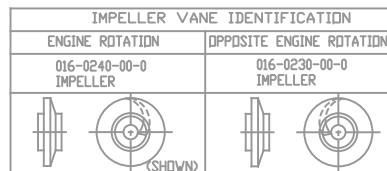
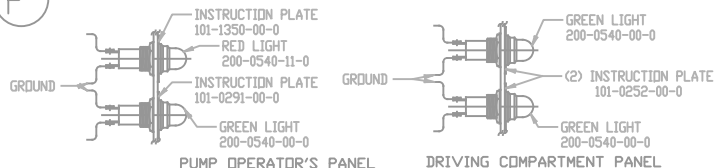
PARTS NOT SHOWN:
101-0310-00-0 GEAR BOX WARNING TAG
101-0381-00-0 PANEL INSTRUCTION PLATE
101-0900-00-0 ENG ROTATION DECAL
101-0900-01-0 DPP-ENG ROTATION DECAL

SEE SHEET 2 FOR CBP4
HORIZONTAL OPTION

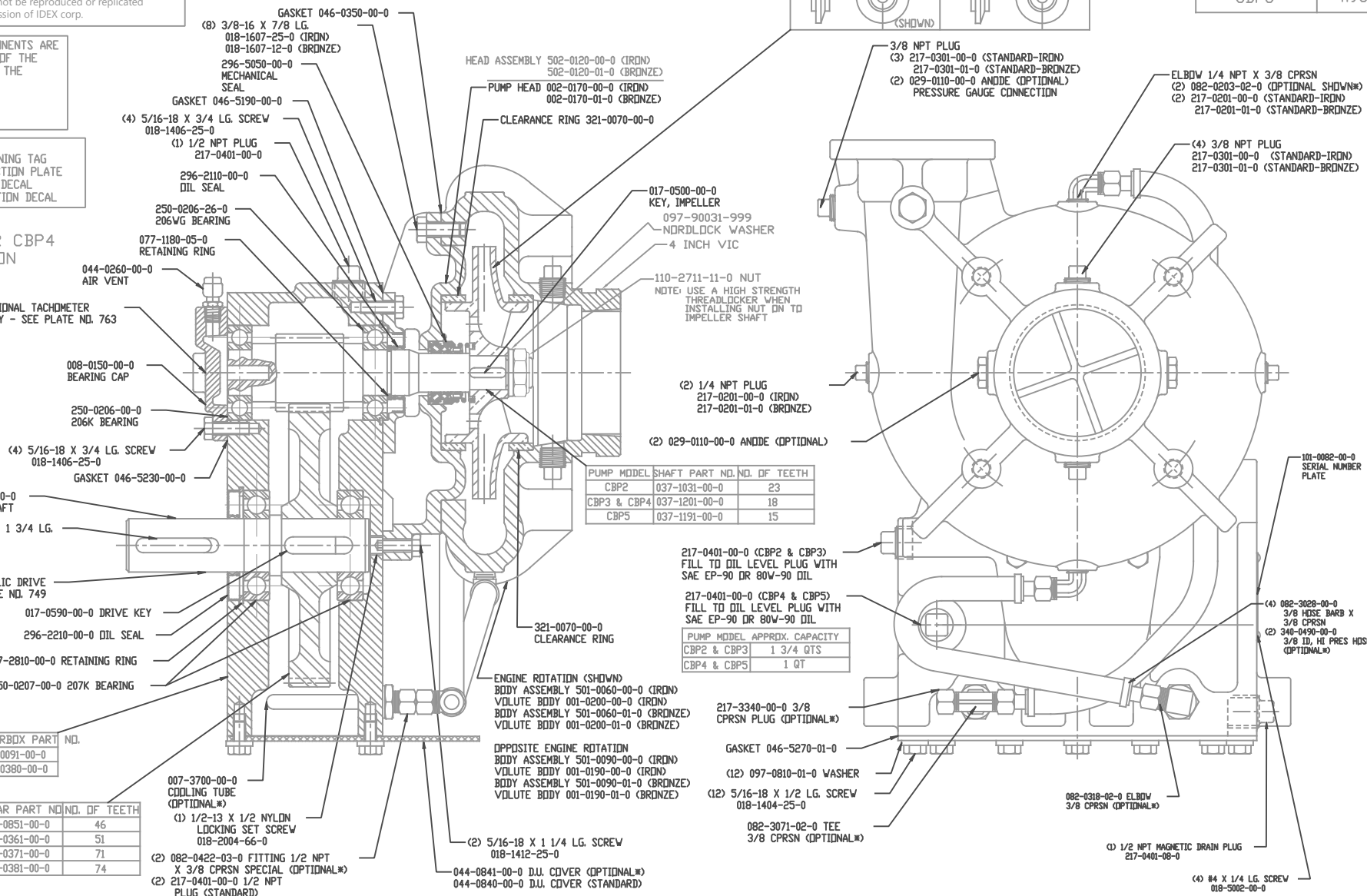
* PUMP SHOWN WITH
OPTIONAL 490-7060-02-0
U-TUBE COOLER (COVER
044-0841-00-0 REQ'D)

P

INDICATOR LIGHTS - FOR COMPLETE WIRING SCHEMATIC SEE PLATE NO. 746



PUMP MODEL NUMBER	GEAR RATIO
CBP2	2.00
CBP3	2.83
CBP4	3.94
CBP5	4.93



PUMP MODEL	GEARBOX PART NO.
CBP2 & CBP3	004-0091-00-0
CBP4 & CBP5	004-0380-00-0

PUMP MODEL	GEAR PART NO.	NO. OF TEETH
CBP2	031-0851-00-0	46
CBP3	031-0361-00-0	51
CBP4	031-0371-00-0	71
CBP5	031-0381-00-0	74

PUMP MODEL	SHAFT PART NO.	NO. OF TEETH
CBP2	037-1031-00-0	23
CBP3 & CBP4	037-1201-00-0	18
CBP5	037-1191-00-0	15

217-0401-00-0 (CBP2 & CBP3)
FILL TO OIL LEVEL PLUG WITH
SAE EP-90 DR 80W-90 OIL

217-0401-00-0 (CBP4 & CBP5)
FILL TO OIL LEVEL PLUG WITH
SAE EP-90 DR 80W-90 OIL

PUMP MODEL	APPROX. CAPACITY
CBP2 & CBP3	1 3/4 QTS
CBP4 & CBP5	1 QT

217-3340-00-0 3/8
CPRSN PLUG (OPTIONAL*)

GASKET 046-5270-01-0

(12) 097-0810-01-0 WASHER
(12) 5/16-18 X 1/2 LG. SCREW
018-1404-25-0

082-3071-02-0 TEE
3/8 CPRSN (OPTIONAL*)

(1) 1/2 NPT MAGNETIC DRAIN PLUG
217-0401-08-0

(4) #4 X 1/4 LG. SCREW
018-5002-00-0

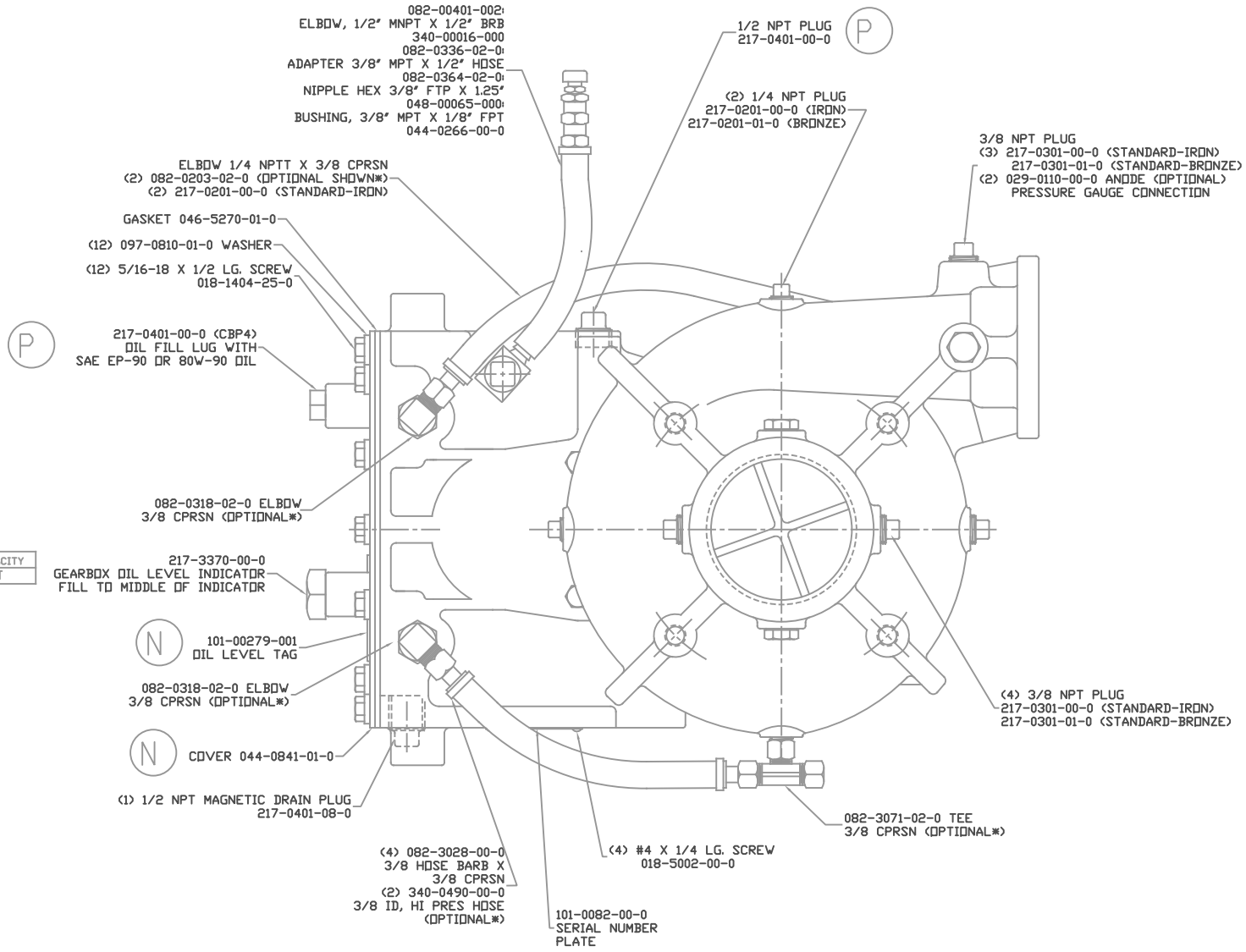
HALE TYPE CBP PUMP SERIES
PLATE NO. 427

ECO NO/REV	CHANGED FROM	BY	DATE	APVD	ECO NO/REV	CHANGED FROM	BY	DATE	APVD
4305 P	REMOVED NOTES FOR CBP2, CBP3 & CBP5 OIL FILL ON SHEET 2. ADDED COMPLIANCE NOTE.	TAM	12-21-17	JLS	3913 LF	ADDED SECOND SHEET	JLS	04-06-15	JRH
					3940 M	REPLACED OIL LEVEL TAG, ADDED DESCRIPTION TO 044-0841-00-0	JLS	04-06-15	JRH
					4222 N		JLS	04-06-15	JRH

HALE PRODUCTS, INC.
A Unit of IDEX Corporation
Conshohocken, PA 19428 USA

DATE: 04-06-15
DRAWN: JLS
CHECKED: JLS
SIZE: 8-1/2 X 11-1/2
SCALE: FULL

(M)



PUMP MODEL	APPROX. CAPACITY
CBP4	0.75 QT

ECO NO	REV	CHANGED FROM	BY	DATE	APV	ECO NO	REV	CHANGED FROM	BY	DATE	APV	DATE	SIZE	SCALE
						3940	H	SEE SHEET 1	DMB	02-09-17	JLS	DATE 2-7-2017	04-1/2 X 8-1/2	FULL
						4222	N	SEE SHEET 1	JS2	10-20-17	JLS			
						4305	P	SEE SHEET 1	TAM	12-21-17	JLS			



HALE PRODUCTS, INC.
A Unit of IDEX Corporation
Conshohocken, PA 19428 USA