



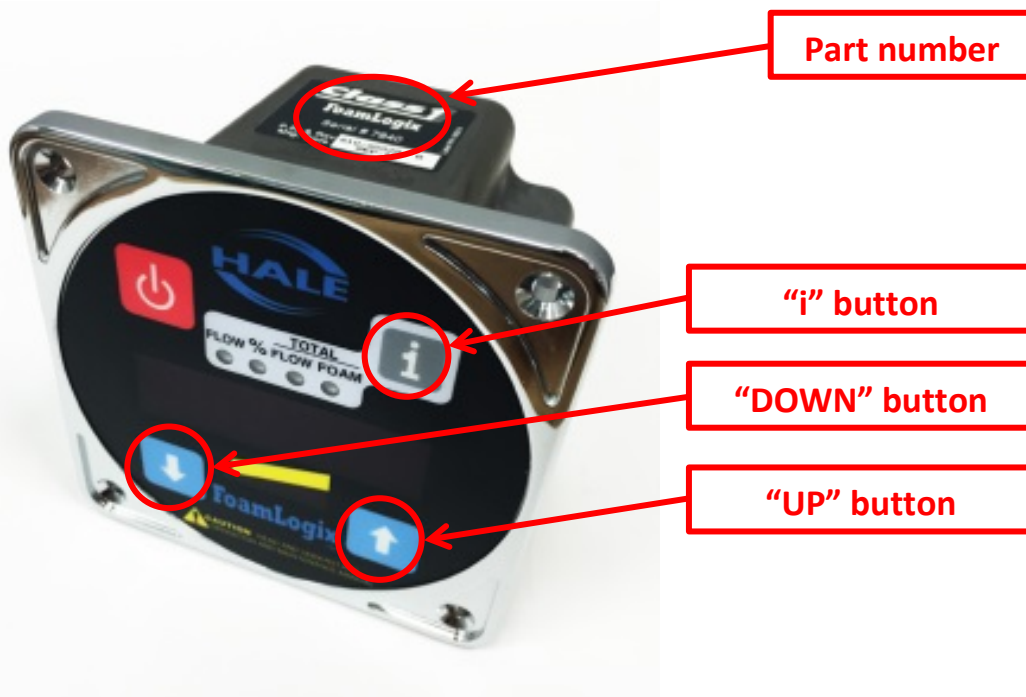
PB-1010 FoamLogix

FoamLogix – Display Replacement for Analog Systems

May 2, 2017

Dear Valued Customer,

The FoamLogix display (part number 107064) for use with analog foam systems is obsolete. The new FoamLogix display (part number 610-00028) is now available for use with digital or analog foam systems and looks identical to the older display (see below).



A password must be entered for the new FoamLogix display to work correctly with analog foam system.

1. Press and hold the "i" button until the display shows "PASS-".
2. Continue holding the "i" button and use the "UP" and "DOWN" arrow buttons to enter the password – UP DOWN DOWN DOWN UP UP UP DOWN.
3. The display will momentarily show "DIGI" to indicate that it has been configured for use with a digital foam system.

Thank you for your continued support of Hale Products, Inc. If you have any further questions or concerns, please feel free to contact our customer service center at 1-800-533-3569.

Sincerely,
Jeremy Foxx
Product manager – Foam and CAFS