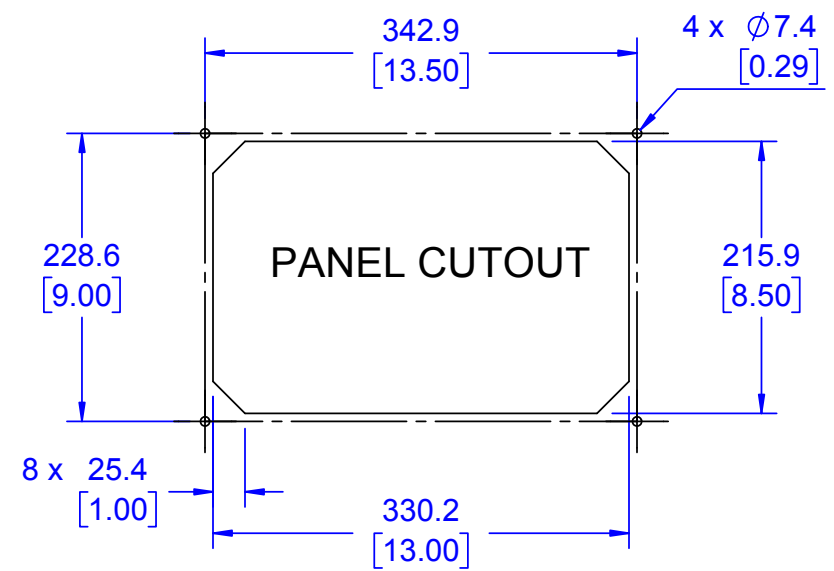
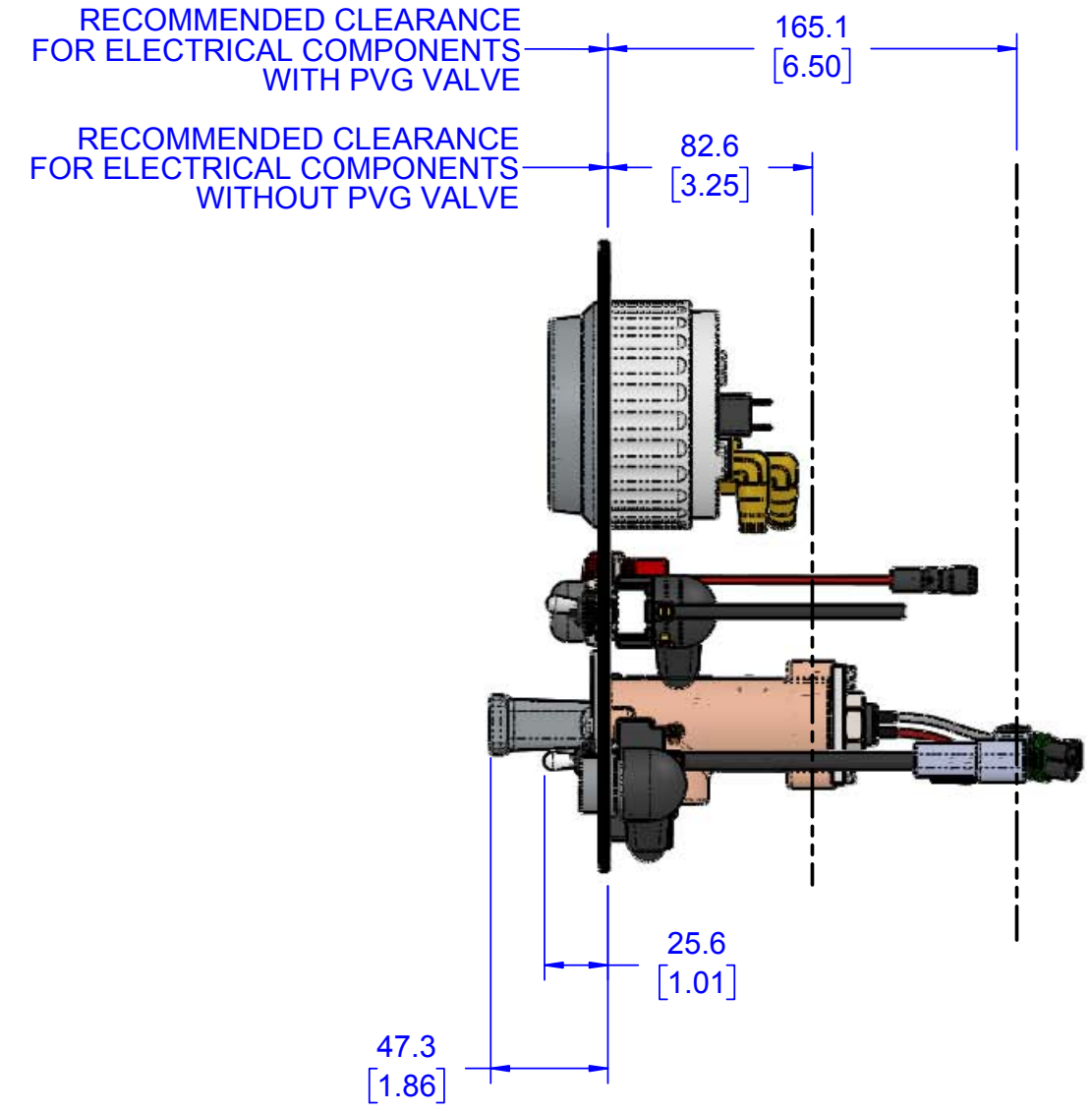
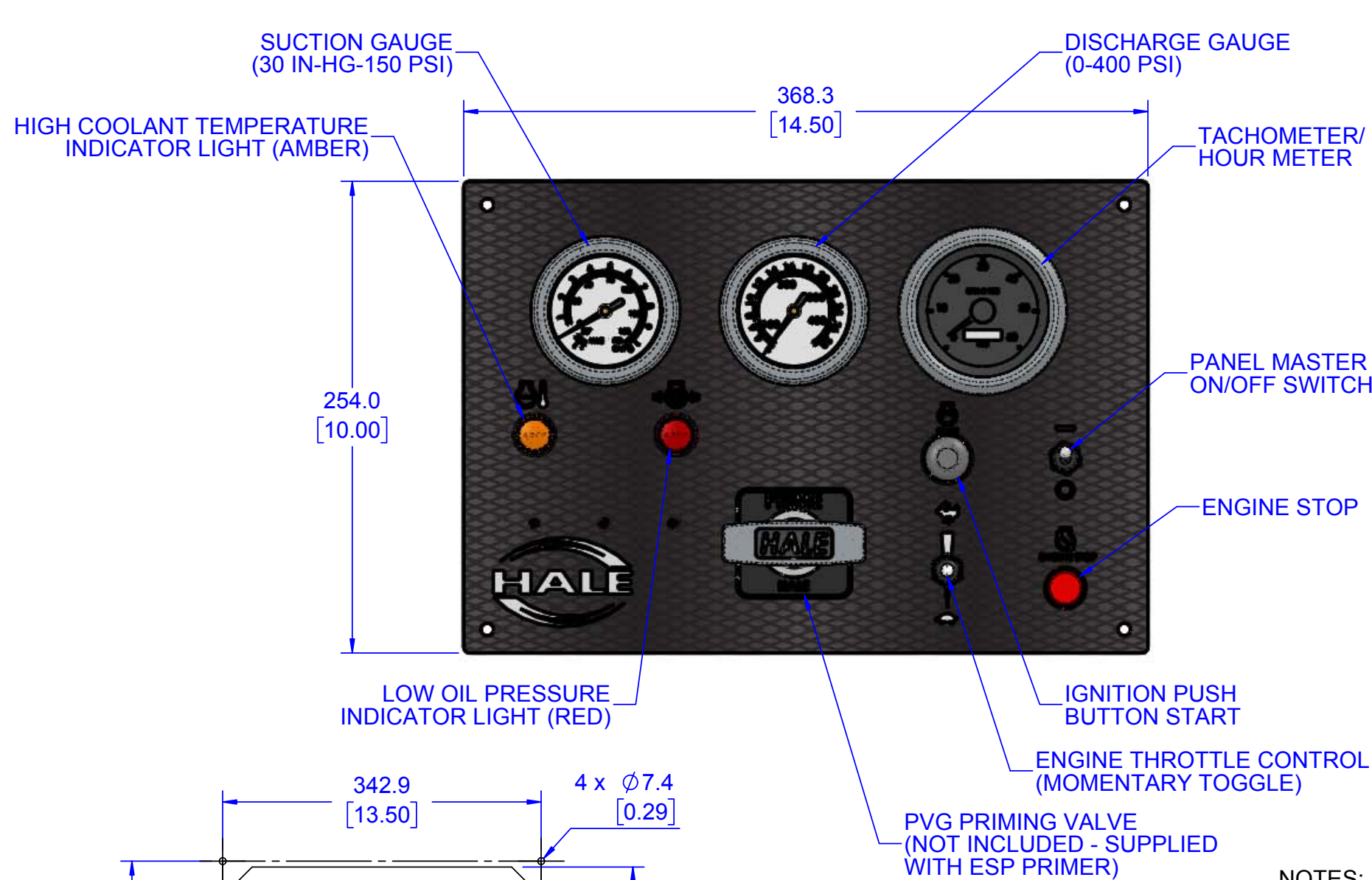


IF IN DOUBT ASK

PROJECTION: 


# KUBOTA DIESEL DUAL PANEL CONTROLS - PUMP PANEL



**NOTES:**

1. PANEL CUTOUT SAME AS STANDARD HALE DIESEL REMOTE MOUNT PANEL.
2. ENGINE CAN BE STARTED/STOPPED AND THROTTLE INCREASED/DECREASED FROM PUMP PANEL OR CAB PANEL.
3. PUMP IS PRIMED AT MAIN PUMP PANEL ONLY.
4. STANDARD LENGTH OF HARNESS FROM ENGINE TO PANEL IS 1.8 M [6.0 FT].

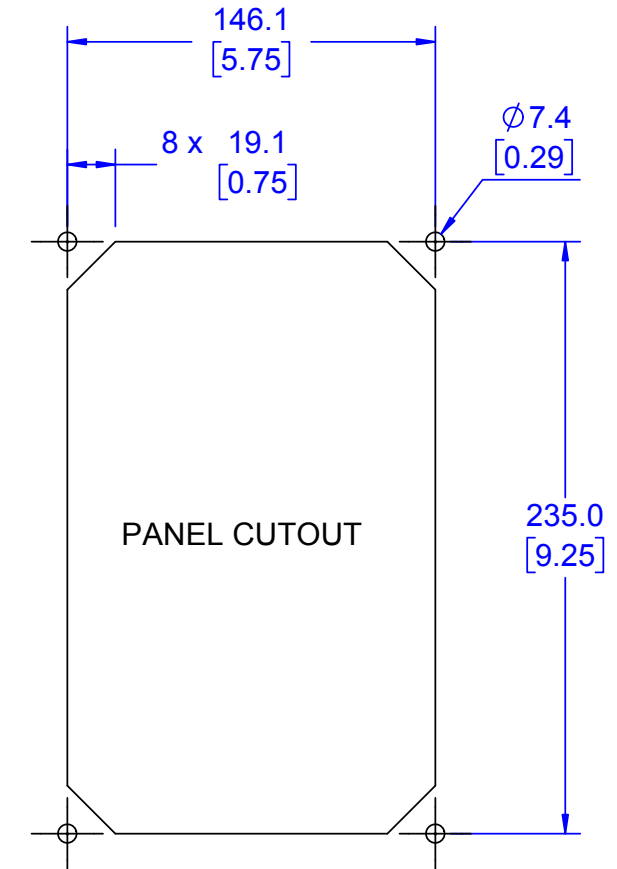
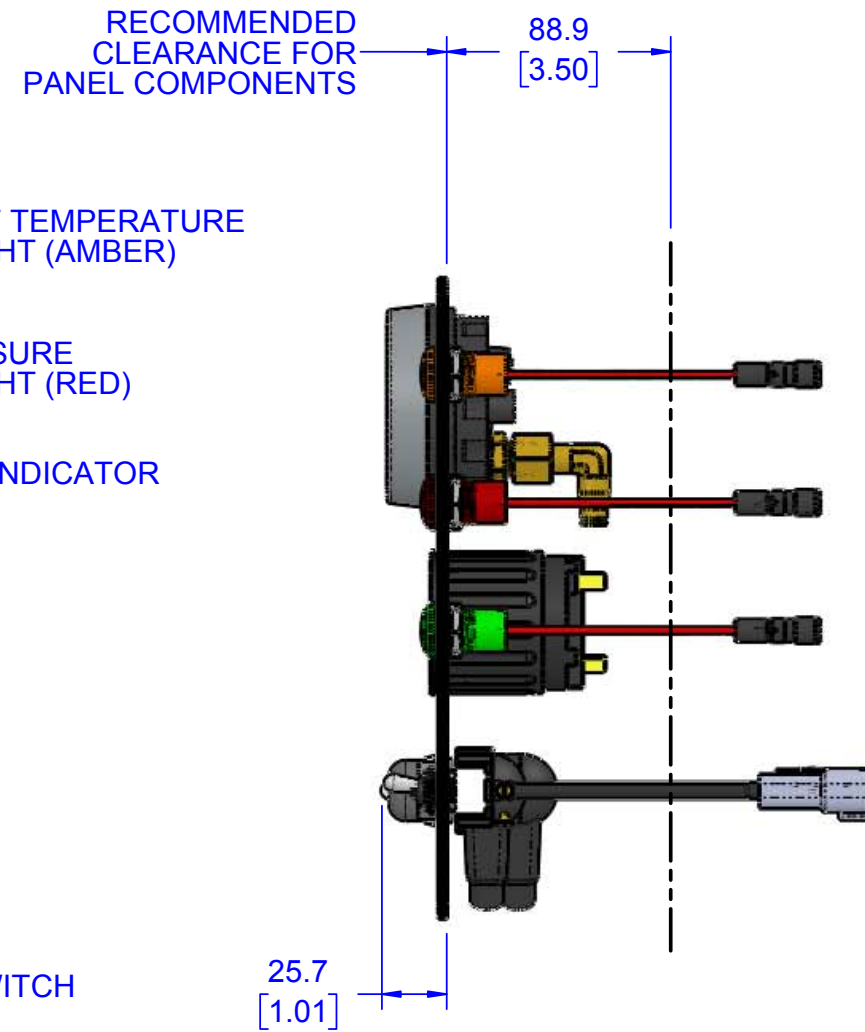
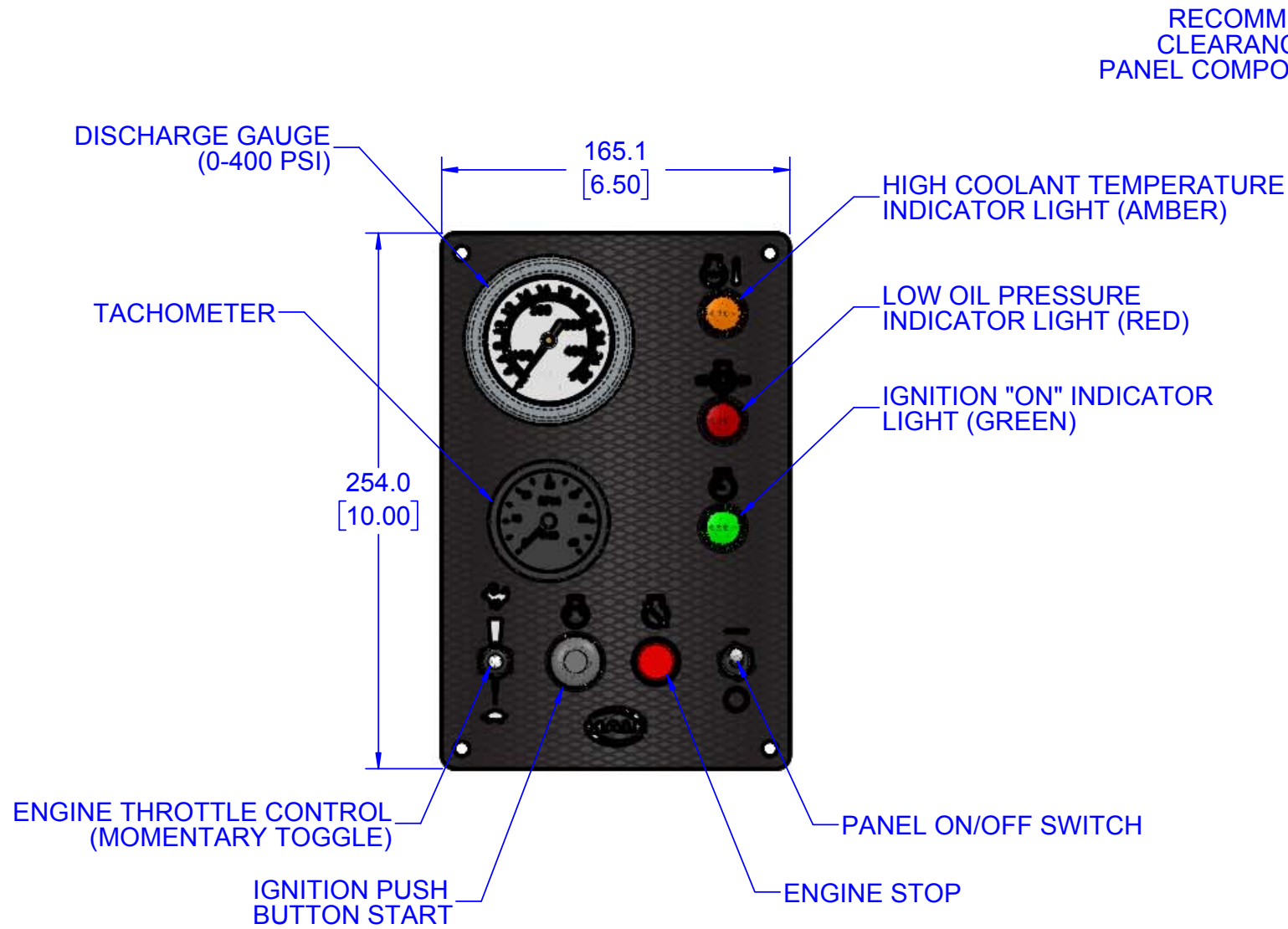
REVISIONS						
ECN	REV.	ZONE	CHANGED FROM	BY	DATE	APVD
CFL3655	A	-	RELEASE FOR DOCUMENTATION	JRP	23JUN2016	JRP
CFL4179	B	-	SEE SHEET 4 OF 4	JRP	28AUG2017	JRP

UNLESS OTHERWISE SPECIFIED DIMENSIONS ARE IN MILLIMETERS [INCHES ARE FOR REFERENCE, ONLY] TOLERANCE FOR MILLIMETER DIMENSIONS: X: ±1 X.X: ±0.5 X.XX: ±0.25 X.XXX: ±0.125 ANGLES: ±0.25° SURFACE TEXTURE IN µm Ra REMOVE ALL SHARP EDGES, 0.25MAX	FSG OF IDEX IDEX CORPORATION				
	MATERIAL		TITLE		
	MADE FROM		KUBOTA DIESEL DUAL PANEL CONTROLS		
	FINISH		DRAWN: JRP APPROVED: JRP DATE: 11FEB2016	SIZE: B SCALE: 1:3	DRAWING NUMBER: FSG-PL-01456 REV: B SHEET: 1 OF 4

IF IN DOUBT ASK

PROJECTION: 

# KUBOTA DIESEL DUAL PANEL CONTROLS - CAB PANEL



NOTES:

- ENGINE CAN BE STARTED/STOPPED AND THROTTLE INCREASED/DECREASED FROM PUMP PANEL OR CAB PANEL.
- PUMP IS PRIMED AT MAIN PUMP PANEL ONLY.

REVISIONS						
ECN	REV.	ZONE	CHANGED FROM	BY	DATE	APVD
CFL3655	A	-	RELEASE FOR DOCUMENTATION	JRP	23JUN2016	JRP
CFL4179	B	-	SEE SHEET 4 OF 4	JRP	28AUG2017	JRP

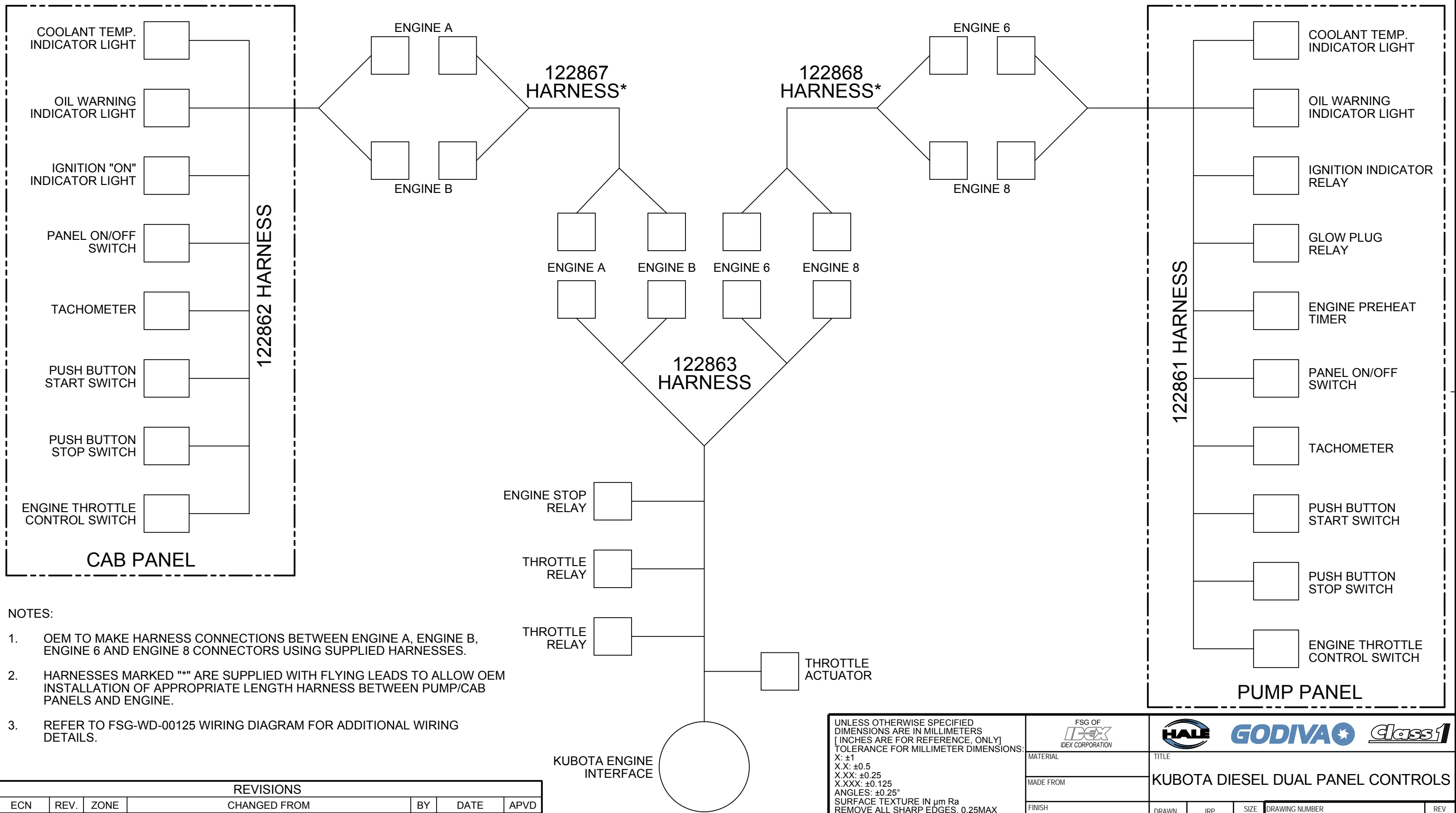
UNLESS OTHERWISE SPECIFIED DIMENSIONS ARE IN MILLIMETERS [INCHES ARE FOR REFERENCE, ONLY] TOLERANCE FOR MILLIMETER DIMENSIONS:  
 X: ±1  
 X.X: ±0.5  
 X.XX: ±0.25  
 X.XXX: ±0.125  
 ANGLES: ±0.25°  
 SURFACE TEXTURE IN µm Ra REMOVE ALL SHARP EDGES, 0.25MAX  
 COPYRIGHT © NOT TO BE REPRODUCED OR USED TO MAKE OTHER DRAWINGS OR MACHINERY

FSG OF IDEX CORPORATION		HALE GODIVA class1	
MATERIAL	TITLE		
MADE FROM	KUBOTA DIESEL DUAL PANEL CONTROLS		
FINISH	DRAWN	JRP	SIZE
PROJECT	APPROVED	JRP	B
	DATE	11FEB2016	SCALE
			1:3
DRAWING NUMBER		REV	
FSG-PL-01456		B	
SHEET		2 OF 4	

IF IN DOUBT ASK

PROJECTION: 

# KUBOTA DIESEL DUAL PANEL CONTROLS - ELECTRICAL CONNECTIONS



- NOTES:
- OEM TO MAKE HARNESS CONNECTIONS BETWEEN ENGINE A, ENGINE B, ENGINE 6 AND ENGINE 8 CONNECTORS USING SUPPLIED HARNESSES.
  - HARNESSES MARKED "\*" ARE SUPPLIED WITH FLYING LEADS TO ALLOW OEM INSTALLATION OF APPROPRIATE LENGTH HARNESS BETWEEN PUMP/CAB PANELS AND ENGINE.
  - REFER TO FSG-WD-00125 WIRING DIAGRAM FOR ADDITIONAL WIRING DETAILS.

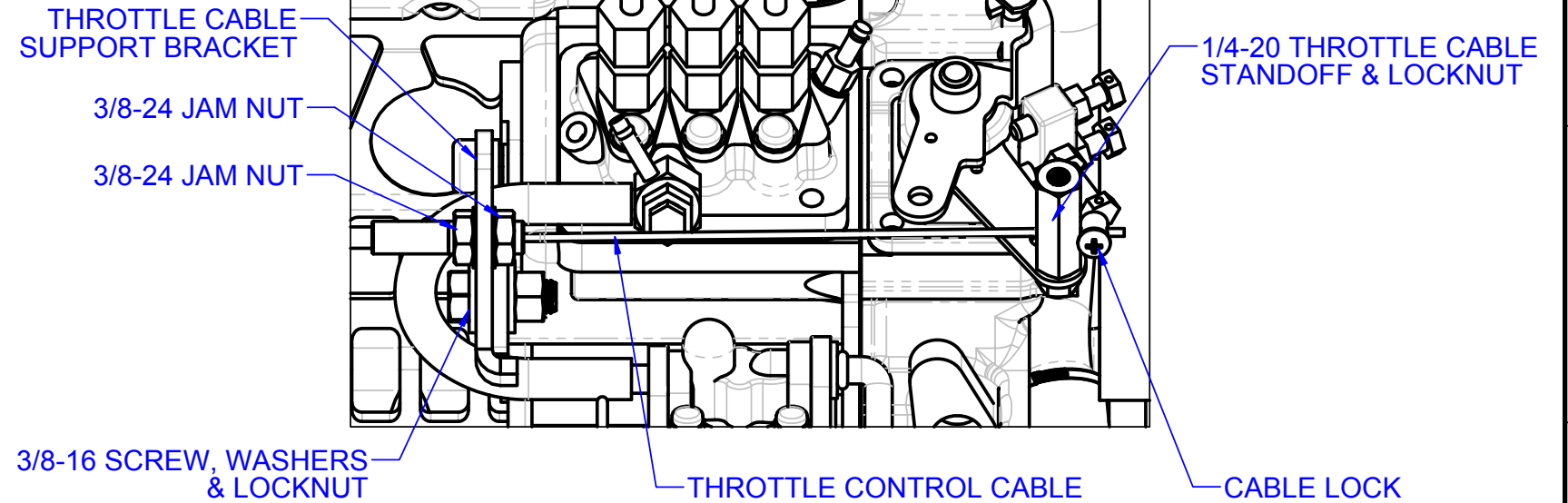
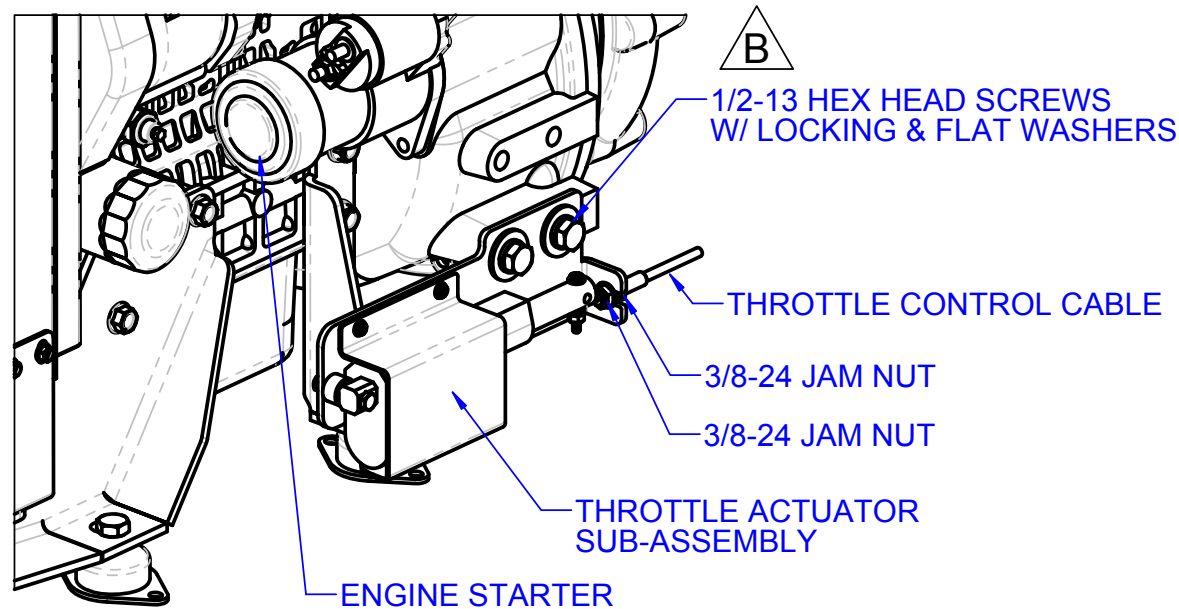
REVISIONS						
ECN	REV.	ZONE	CHANGED FROM	BY	DATE	APVD
CFL3655	A	-	RELEASE FOR DOCUMENTATION	JRP	23JUN2016	JRP
CFL4179	B	-	SEE SHEET 4 OF 4	JRP	28AUG2017	JRP

UNLESS OTHERWISE SPECIFIED DIMENSIONS ARE IN MILLIMETERS [INCHES ARE FOR REFERENCE, ONLY] TOLERANCE FOR MILLIMETER DIMENSIONS: X: ±1 X.X: ±0.5 X.XX: ±0.25 X.XXX: ±0.125 ANGLES: ±0.25° SURFACE TEXTURE IN µm Ra REMOVE ALL SHARP EDGES, 0.25MAX		FSG OF <b>IDEX</b> IDEX CORPORATION	<b>HALE</b> <b>GODIVA</b> <i>class1</i>
MATERIAL	TITLE KUBOTA DIESEL DUAL PANEL CONTROLS		
MADE FROM	DRAWN	JRP	SIZE <b>B</b>
FINISH	APPROVED	JRP	DRAWING NUMBER <b>FSG-PL-01456</b>
PROJECT	DATE	11FEB2016	SCALE 1:3
COPYRIGHT © NOT TO BE REPRODUCED OR USED TO MAKE OTHER DRAWINGS OR MACHINERY		REV <b>B</b>	SHEET 3 OF 4

# KUBOTA DIESEL DUAL PANEL CONTROLS - THROTTLE ACTUATOR INSTALLATION

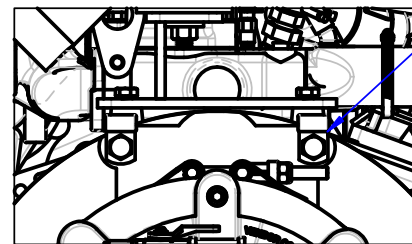
IF IN DOUBT ASK

PROJECTION:

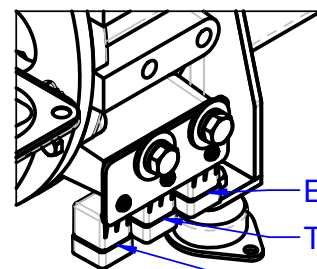


**B**

1. INSTALL THROTTLE ACTUATOR SUB-ASSEMBLY ON STARTER SIDE OF ENGINE USING THE PROVIDED 1/2-13 HEX HEAD SCREWS & WASHERS.
2. APPLY 12V POWER TO THROTTLE ACTUATOR TO FULLY EXTEND CONTROL ARM PRIOR TO INSTALLING CABLE.
3. LOOSEN 3/8-24 JAM NUTS AND LOCK WASHERS ON LOOPED END OF CONTROL CABLE AND INSTALL THREADED CABLE CONDUIT IN THROTTLE ACTUATOR SUB-ASSEMBLY MOUNTING BRACKET.
4. CONNECT LOOPED END OF CABLE TO ACTUATOR CONTROL ARM USING SUPPLIED #10-24 SCREW, WASHERS AND NUT.



5. INSERT FLEXIBLE CABLE CONDUIT INTO PROVIDED CABLE CLAMPS AND LOOSELY INSTALL IN THE BELL HOUSING ADAPTER MOUNTING HOLES AS SHOWN. CABLE MAY REQUIRE SLIGHT ADJUSTMENT ONCE FULLY INSTALLED.



**B**

6. INSTALL RELAY BRACKET ON ENGINE FUEL PUMP SIDE USING THE PROVIDED 1/2-13 HEX HEAD SCREWS & WASHERS.

7. INSTALL THROTTLE CABLE SUPPORT BRACKET USING THE PROVIDED 3/8-16 HEX HEAD SCREW, NUT & WASHERS.
8. REMOVE (1) 3/8-24 JAM NUT AND LOCK WASHER FROM STRAIGHT END OF THROTTLE CABLE AND INSERT THREADED CABLE CONDUIT THROUGH LOWER HOLE IN CABLE SUPPORT BRACKET. UPPER HOLE MAY BE USED FOR MANUAL THROTTLE CABLE CONNECTION.
9. RE-INSTALL 3/8-24 JAM NUT AND LOCK WASHER ON OPPOSITE SIDE OF THROTTLE CABLE SUPPORT BRACKET TO HOLD CABLE IN PLACE.
10. INSTALL 1/4-20 THROTTLE CABLE STANDOFF IN OUTER HOLE OF ENGINE THROTTLE LEVER & USE 1/4-20 LOCKNUT TO HOLD IN PLACE. TIGHTEN LOCKNUT WHILE STILL ALLOWING STANDOFF TO SPIN FREELY.
11. INSTALL THROTTLE CABLE THROUGH LOWER HOLE IN CABLE STANDOFF AND INSTALL CABLE LOCK.
12. MAKE A 90° BEND IN END OF CABLE AFTER THE CABLE LOCK AND TRIM OFF EXCESS CABLE.

REVISIONS						
ECN	REV.	ZONE	CHANGED FROM	BY	DATE	APVD
CFL3655	A	-	RELEASE FOR DOCUMENTATION	JRP	23JUN2016	JRP
CFL4179	B	A3; C1; E1	M12-1.75 SCREWS TO 1/2-13 SCREWS	JRP	28AUG2017	JRP

UNLESS OTHERWISE SPECIFIED DIMENSIONS ARE IN MILLIMETERS [INCHES ARE FOR REFERENCE, ONLY] TOLERANCE FOR MILLIMETER DIMENSIONS:  
 X: ±1  
 X.X: ±0.5  
 X.XX: ±0.25  
 X.XXX: ±0.125  
 ANGLES: ±0.25°  
 SURFACE TEXTURE IN  $\mu\text{m Ra}$   
 REMOVE ALL SHARP EDGES, 0.25MAX

COPYRIGHT ©  
 NOT TO BE REPRODUCED OR USED TO MAKE OTHER DRAWINGS OR MACHINERY

FSG OF IDEX CORPORATION		HALE GODIVA class1	
MATERIAL		TITLE	
MADE FROM		KUBOTA DIESEL DUAL PANEL CONTROLS	
FINISH		DRAWN	JRP
PROJECT		APPROVED	JRP
		DATE	11FEB2016
		SIZE	B
		SCALE	1:3
		DRAWING NUMBER	FSG-PL-01456
		REV	B
		SHEET	4 OF 4