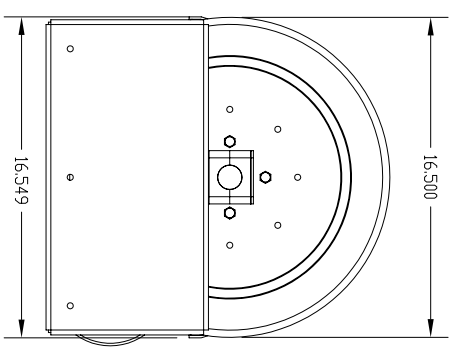
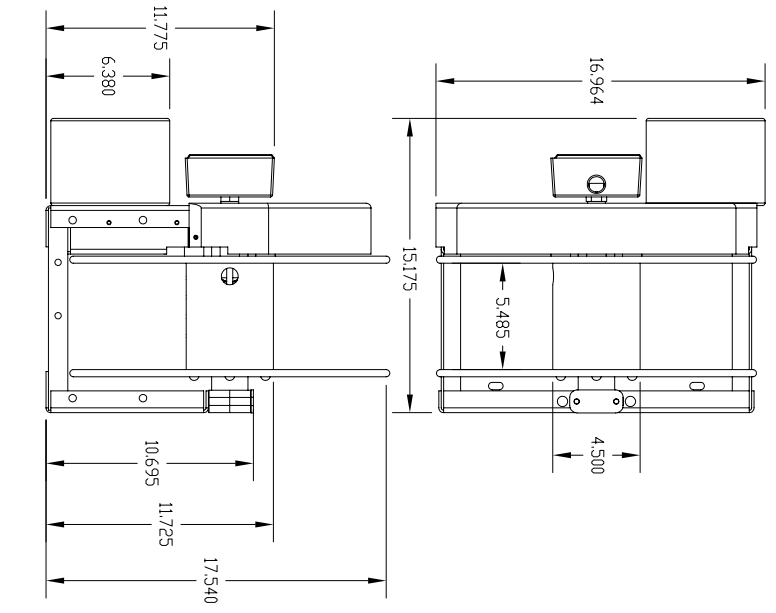
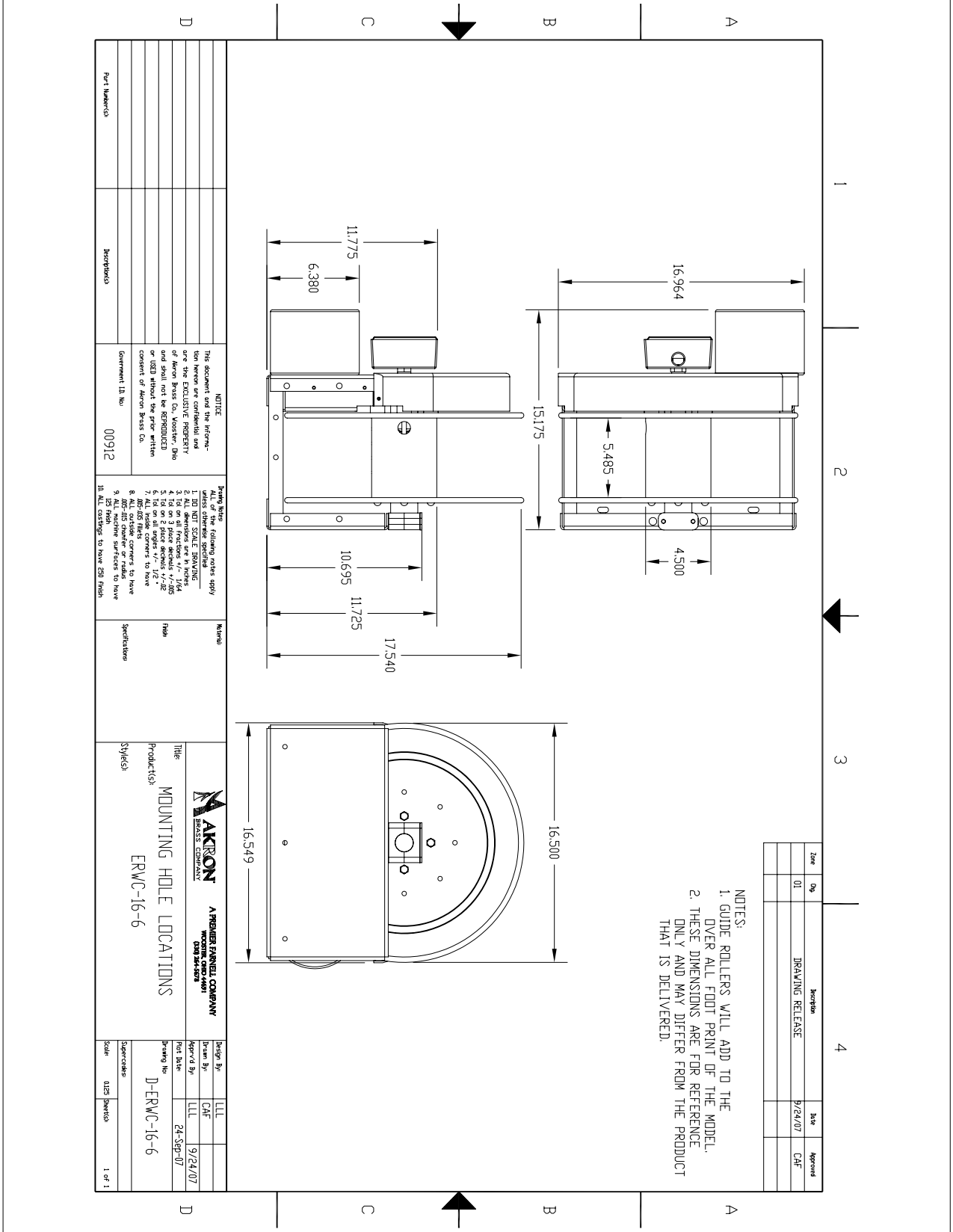


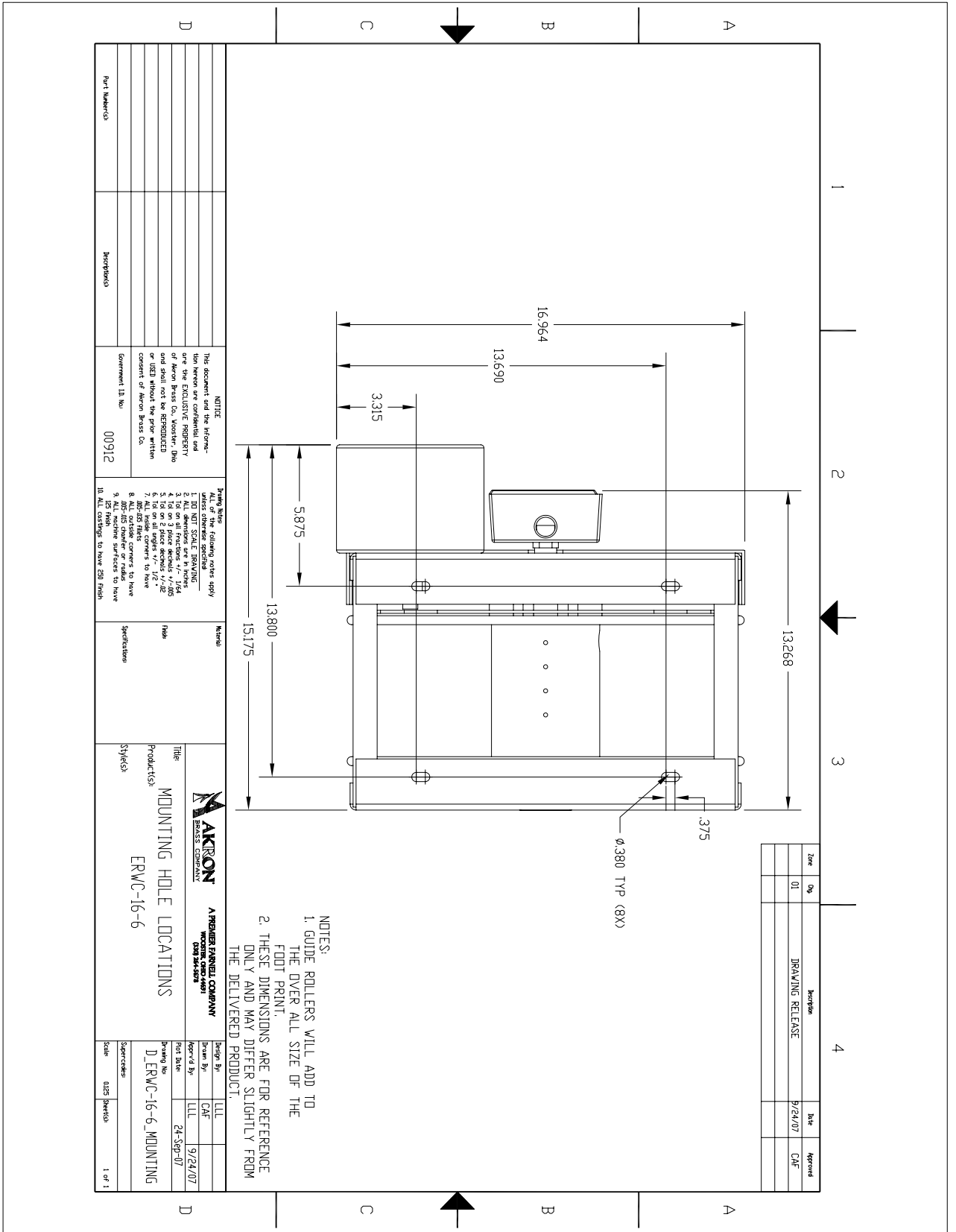
Zone	Obj	Description	Date	Approved
	01	DRAWING RELEASE	9/24/07	CAF

NOTES:  
 1. GUIDE ROLLERS WILL ADD TO THE OVER ALL FOOT PRINT OF THE MODEL.  
 2. THESE DIMENSIONS ARE FOR REFERENCE ONLY AND MAY DIFFER FROM THE PRODUCT THAT IS DELIVERED.



Part Number(s)		Description(s)		Quantity		Material		Notes		Title		Product(s)		Drawing No.		Scale							
<p><b>NOTICE</b>          This document and the information herein are confidential and are the EXCLUSIVE PROPERTY of Akron Brass Co. Violation or use without the prior written consent of Akron Brass Co. Government ID No: 00912</p>				<p><b>Parting Notes - Finish notes apply unless otherwise specified</b>            1. DO NOT SCALE DRAWING            2. All dimensions are in inches            3. Tol on 1 place decimal +/- .015            4. Tol on 2 place decimal +/- .005            5. Tol on 3 place decimal +/- .002            6. All holes are standard unless otherwise specified            7. All holes are to have chamfered ends            8. All chamfered surfaces to have a .005-015 chamfer or radius            9. All machine surfaces to have a .005-015 finish            10. All castings to have 250 finish</p>				<p><b>AKRON</b>            BRASS COMPANY            4700 S. W. 11TH AVE.            WEST PALM BEACH, FL 33411            (561) 841-1111</p>				<p><b>AKRON</b>            AERIAL PANEL COMPANY            1000 S. W. 11TH AVE.            WEST PALM BEACH, FL 33411            (561) 841-1111</p>				<p>Design By: LLL            Drawn By: CAF            Checked By: LLL            Part Date: 24-SEP-07</p>		<p>9/24/07</p>		<p>D-ERWC-16-6</p>		<p>Scale: 1:1</p>	





Type	No.	Description	Date	Approved
	01	DRAWING RELEASE	9/24/07	CAF

NOTES:  
 1. GUIDE ROLLERS WILL ADD TO THE OVER ALL SIZE OF THE FOOT PRINT.  
 2. THESE DIMENSIONS ARE FOR REFERENCE ONLY AND MAY DIFFER SLIGHTLY FROM THE DELIVERED PRODUCT.

<p><b>AKRON</b> BRASS COMPANY</p> <p><b>AKRON FERRULES COMPANY</b> AKRON FERRULES COMPANY 1000 W. 10TH ST. AKRON, OH 44308-1000 TEL: 330.375.4400 FAX: 330.375.4401</p>		<p>Design By: LLL</p> <p>Drawn By: CAF</p> <p>Revised By: LLL</p> <p>Part Name: D-ERWC-16-6 MOUNTING</p> <p>Scale: 0.125 (1/8")</p>
<p>Title: MOUNTING HOLE LOCATIONS</p> <p>Product(s): ERWC-16-6</p> <p>Style(s):</p>		<p>Date: 9/24/07</p> <p>Time: 24-SEP-07</p>
<p>Material: Steel</p> <p>Finish: Pass</p> <p>Specifications:</p>		<p>Part Number(s): 00912</p> <p>Description:</p>
<p><b>NOTICE</b></p> <p>This document and the information herein are confidential and are the EXCLUSIVE PROPERTY of Akron Brass Co., Wooster, Ohio and shall not be REPRODUCED or USED without the prior written consent of Akron Brass Co.</p> <p>Government ID No: 00912</p>		
<p><b>Parting Lines</b> - Assembly notes apply unless otherwise specified</p> <p>1. DO NOT SCALE DRAWING</p> <p>2. ALL DIMENSIONS ARE IN INCHES</p> <p>3. TOLERANCES UNLESS OTHERWISE SPECIFIED</p> <p>4. 1st on 2 place decimal +/- .015</p> <p>5. 1st on 3 place decimal +/- .010</p> <p>6. 1st on 4 place decimal +/- .005</p> <p>7. ALL HOLE DIMENSIONS TO HAVE .005-.010 CLEARANCE UNLESS OTHERWISE SPECIFIED</p> <p>8. ALL MACHINED SURFACES TO HAVE .005-.010 CLEARANCE UNLESS OTHERWISE SPECIFIED</p> <p>9. ALL MACHINED SURFACES TO HAVE 250 FINISH UNLESS OTHERWISE SPECIFIED</p>		