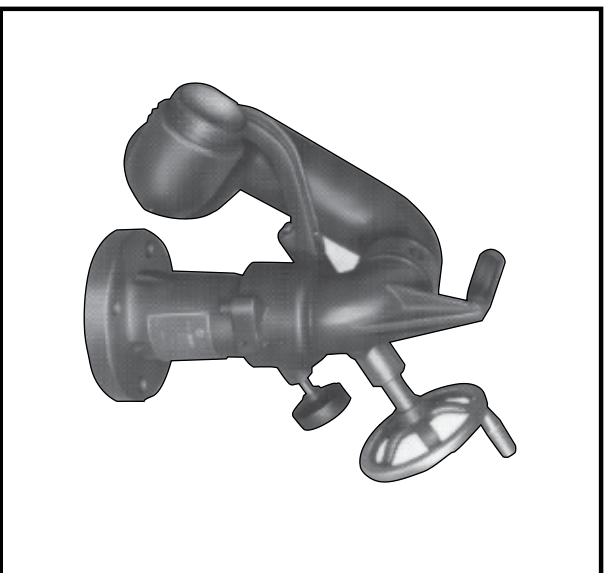




Style 9525 Field Service Kit for

3425 ARIES™ Monitor



3425

PHONE: 330.264.5678 or 800.228.1161 | FAX: 330.264.2944 or
800.531.7335 | akronbrass.com REVISED: 7/11

WARRANTY AND DISCLAIMER: We warrant Akron Brass products for a period of five (5) years after purchase against defects in materials or workmanship. Akron Brass will repair or replace product which fails to satisfy this warranty. Repair or replacement shall be at the discretion of Akron Brass. Products must be promptly returned to Akron Brass for warranty service.

We will not be responsible for wear and tear, any improper installation, use, maintenance or storage, negligence of the owner or user, repair or modification after delivery, damage, failure to follow our instructions or recommendations or anything else beyond our control. **WE MAKE NO WARRANTIES, EXPRESS OR IMPLIED OTHER THAN THOSE INCLUDED IN THIS WARRANTY STATEMENT, AND WE DISCLAIM ANY IMPLIED WARRANTY OF MERCHANTABILITY OR FITNESS FOR ANY PARTICULAR PURPOSE.** Further, we will not be responsible for any consequential, incidental or indirect damages (including, but not limited to, any loss of profits) from any cause whatsoever. No person has authority to change this warranty.

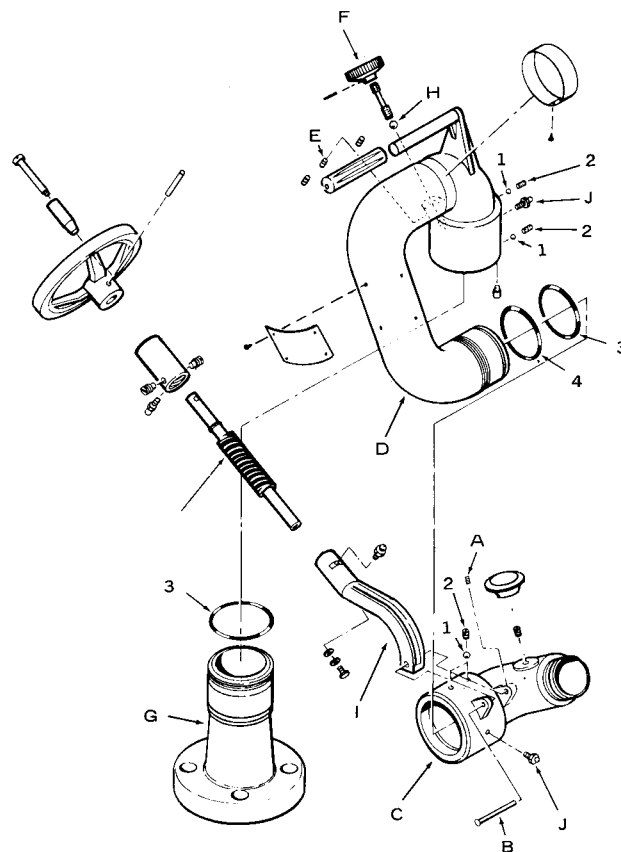
© Akron Brass Company, 2011. All rights reserved. No portion of this can be reproduced without the express written consent of Akron Brass Company.



Tested... Proven... Trusted.

ISO 9001 REGISTERED COMPANY

Style 9525 Field Service Kit for



ITEM NO.	DESCRIPTION	PART NUMBER	QTY
1	Ball Bearings	7-03-017	50
2	Swivel Plug	7-42-023	4
3	O-Ring	7-57-035	2
4	O-Ring	7-57-149	1

Parts included in this kit are normally all that are required to repair leaks in the shutoff area. If additional nozzle components are required, contact Akron Brass for the appropriate technical service bulletin or return the nozzle to our factory; Akron Brass Co., Old Mansfield Rd., Wooster, Ohio 44691 or Akron Manufacturing Co., P.O. Box 280, Aylmer, Ontario N5H2R9.

FIELD SERVICE KIT INSTRUCTIONS

DISASSEMBLY

1. Remove set screw (A).
2. Pull out elevation pin (B).
3. Remove the two swivel plugs (2) from the outlet elbow (C).
4. Turn the outlet elbow so that the ball bearings (1) fall out. It may be necessary to apply a solvent to liquify the petroleum based grease on the based grease on the ball bearing.
5. Once the ball bearings are removed, slide the outlet elbow off of the outlet pipe.
6. Remove O-Rings (3 and 4) from the outlet pipe (D).
7. Remove set screw (E) with an 1/8" allen wrench.
8. Remove the brake shaft (F) by turning counter clockwise.
9. Remove the two swivel plugs (2) from the outlet pipe and remove the ball bearings (1) as in Step 4.
10. Slide the outlet pipe off the base (G) being careful not to lose the brake ball (H).
11. Remove the O-Ring (3) from the base.

ASSEMBLY

NOTE: All O-Rings must be lubricated with O-Ring grease before assembly.

1. Install the new O-Ring (3) on the base (G).
2. Carefully slide the outlet pipe (D) onto the base.
3. Line up the two holes in the side of the outlet pipe with the raceways in the base and insert the ball bearings (1) (approximately 47 per hole). The extra ball bearings included in the kit may not be needed.
4. Install two of the new swivel plugs (2).
5. Reinstall the brake ball (H), brake shaft (F) and set screw (E).
6. Install the new O-Rings (3 and 4) on the outlet pipe.
7. Carefully slide the outlet elbow (C) over the outlet pipe.
8. Install the ball bearings (1) and swivel plugs (2) as in Step 3 (approximately 47 per hole.)
9. Line up the holes in the elevation arm (1) with the ears on the outlet elbow and reinstall the elevation pin. Be sure the pin goes all the way in.
10. Reinstall the set screw (A) so that it locks the elevation pin in place.
11. Apply a petroleum based grease through the two grease fittings (J) until grease appears through the hole in the swivel plugs.
12. Check the monitor for smooth rotation and elevation.