



# Style 9179 Field Service Kit FOR:

- 1762 Wide-Range TurboJet
- 1763 Wide-Range TurboJet w/Pistol Grip
- 4820 1 1/2" Assault w/Pistol Grip
- 4822 1 1/2" High Range Assault
- 4823 1 1/2" High Range Assault w/Pistol Grip
- 4825 2 1/2" High Range Assault
- 4826 2 1/2" High Range Assault w/Pistol Grip
- 4862 Mid-Range Assault
- 4863 Mid-Range Assault w/Pistol Grip

PHONE: 330.264.5678 or 800.228.1161 | FAX: 330.264.2944 or 800.5317335 | [akronbrass.com](http://akronbrass.com) REVISED: 10/10

**WARRANTY AND DISCLAIMER:** We warrant Akron Brass products for a period of five (5) years after purchase against defects in materials or workmanship. Akron Brass will repair or replace product which fails to satisfy this warranty. Repair or replacement shall be at the discretion of Akron Brass. Products must be promptly returned to Akron Brass for warranty service.

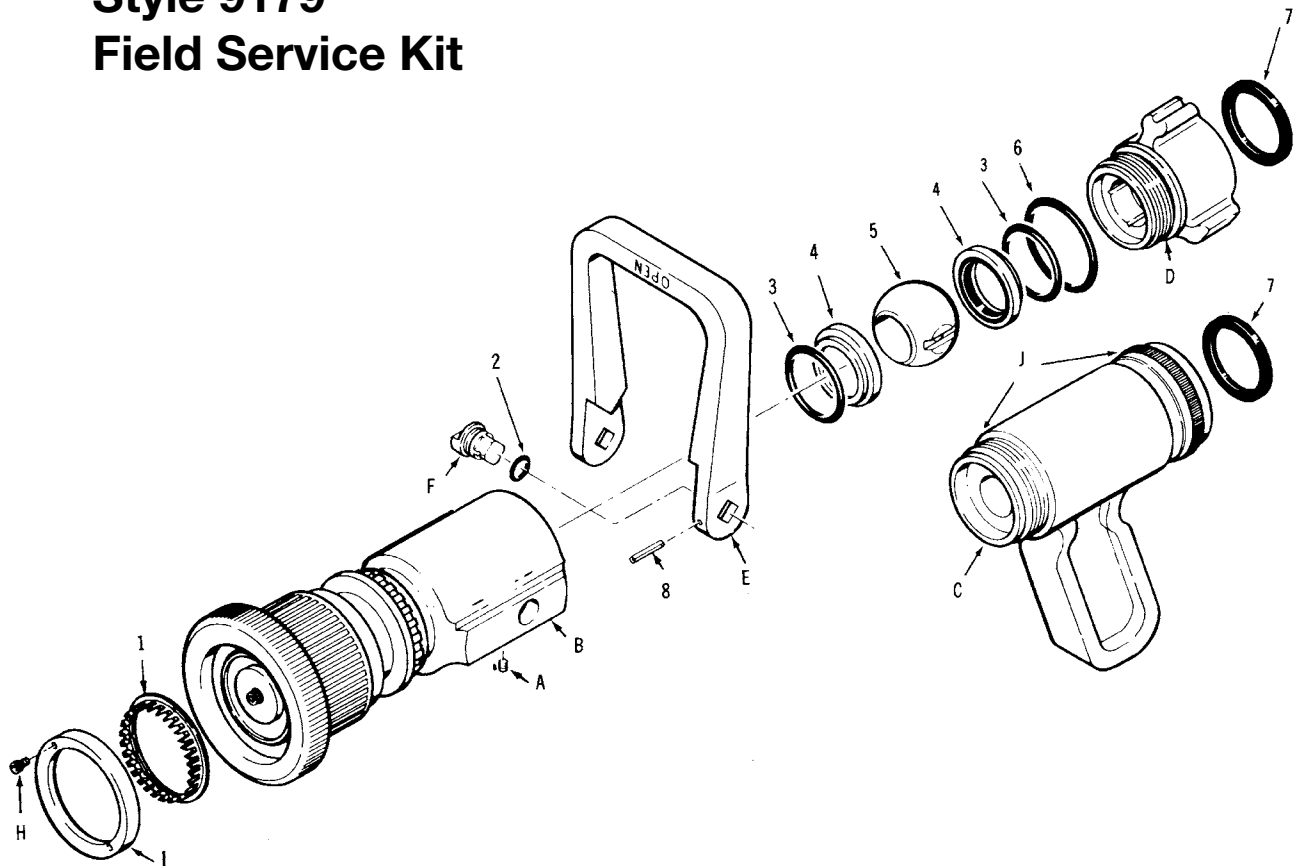
We will not be responsible for wear and tear, any improper installation, use, maintenance or storage, negligence of the owner or user, repair or modification after delivery, damage, failure to follow our instructions or recommendations or anything else beyond our control. **WE MAKE NO WARRANTIES, EXPRESS OR IMPLIED OTHER THAN THOSE INCLUDED IN THIS WARRANTY STATEMENT, AND WE DISCLAIM ANY IMPLIED WARRANTY OF MERCHANTABILITY OR FITNESS FOR ANY PARTICULAR PURPOSE.** Further, we will not be responsible for any consequential, incidental or indirect damages (including, but not limited to, lost profits) from any person who has authority to change this warranty. This warranty is the property of Akron Brass Company, 2000. All rights reserved. No portion of this can be reproduced without the express written consent of Akron Brass Company.



**Tested... Proven... Trusted.**

ISO 9001 REGISTERED COMPANY

# Style 9179 Field Service Kit



ITEM NO.	DESCRIPTION	PART NO.
1	Turbine Teeth	772160
1	Turbine Teeth	772153
2	O-Ring (2)	757269
3	O-Ring (2)	757422
4	Seat (2)	769243
5	Ball	704029
6	O-Ring	757265
7	Gasket 1-1/2"	717042
7	Gasket 2-1/2"	717043
8	Roll Pin (2)	744062

Parts included in this kit are normally all that are required to repair leaks in the shutoff area. If additional nozzle components are required, contact Akron Brass for the appropriate technical service bulletin or return the nozzle to our factory: Akron Brass Co., Old Mansfield Rd., Wooster, Ohio 44691.

USE THESE ILLUSTRATIONS TO IDENTIFY THE VARIOUS PARTS IN THIS KIT

**Item No. 4**  
PN 7-69-243  
Seat (2)

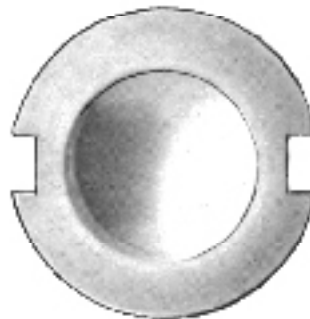


**Item No. 1**  
PN 7-72-160  
2 1/2" Turbine Teeth



PN 7-72-153  
Mid-Range Turbine  
Teeth  
(Not Shown)

**Item No. 5**  
PN 7-04-029  
Shutoff Ball



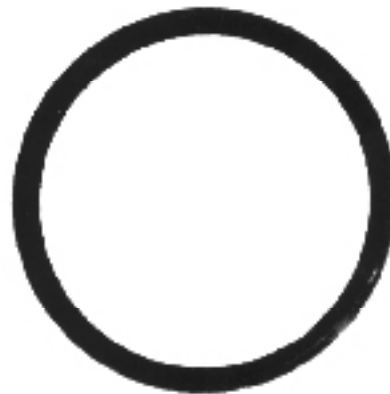
**Item No. 8**  
PN 7-44-062  
Roll Pin (2)



**Rivet**  
PN 7-54-003  
USE TO DRIVE OUT  
ROLL PINS IN HANDLE  
TRUNNIONS



**Item No. 6**  
PN 7-57-265  
O-Ring  
Inlet Adapter



**Item No. 2**  
PN 7-57-269  
O-Ring (2)  
Handle Trunnions



**Item No. 3**  
PN 757-422  
O-Ring (2)



**Item No. 7**  
PN 7-17-042  
1-1/2" Swivel Gasket



**PN 7-17-043**  
2-1/2" Swivel Gasket  
(Not Shown)

## DISASSEMBLY

1. Remove the swivel gasket (7).
2. Remove the set screw (A) at the swivel end of the shutoff body (B) with a 1/8" Allen wrench.
3. Insert a tool 1-1/16" square into the grooves in the swivel adapter (D) and remove (counterclockwise).
4. Remove the O-Ring (6) from the inlet adapter (C or D).
5. Remove the seat and O-Ring (4 and 3) from the inlet adapter (C or D).
6. Turn the handle (E) into the open position and remove the ball (5).
7. Mark the end of the trunnions (F) and handle so they can be reassembled in exactly the same position. (Use chalk, grease pencil, etc.).
8. Take the rivet supplied in the service parts kit and drive out the roll pins (8) securing the handle to the trunnions.
9. Push the trunnions into the shutoff body until they are free. Remove the handle and trunnions.
10. Remove the O-Rings (2) from the trunnions.
11. Remove the front seat and O-Ring (4 and 3). Depending on the age of the nozzle the seat may not have an O-Ring. The new seats must be installed with an O-Ring.
12. Remove the two set screws (H) on the turbine retaining ring (I) with a 3/32" Allen wrench.
13. Remove the turbine retaining ring.
14. Remove the turbine teeth (1).

## REASSEMBLY

NOTE: All O-Rings must be lubricated with Parker-O-Lube or equivalent before assembly.

1. Install the new O-Rings (3) on the new seats (4).
2. Insert one new seat with O-Ring into the shutoff body (B).
3. Install the new O-Rings (2) on the trunnions (F).
4. Place the handle (E) over the trunnions holes with the "closed" lettering facing the inlet.
5. Install the trunnions from inside the shutoff body, using the marks (Disassembly Step 7) to position properly.
6. Install the roll pins (8) to secure the handle to the trunnions.
7. Turn the handle into the open position and insert the new ball (5).
8. Install the other new seat with O-Ring into the recess of the inlet adapter (D), or pistol grip (C).
9. Install the new O-Ring (6) in the shutoff body recess.
10. With the handle in the closed position, thread the swivel adapter into the shutoff body.

NOTE: Continue tightening until resistance is felt when opening and closing the shutoff.

11. Install the new swivel gasket (7).
12. Install the new turbine teeth (1).
13. Line up screw holes with the holes in the nozzle body and place the turbine retaining ring (I) back into position.
14. Apply Loctite 222 or equivalent to set screws (H) and install and tighten.
15. Test the nozzle with water to determine if the shutoff functions properly. If a small leak is present, tighten the inlet adapter slightly to eliminate the leak.
16. Once the shutoff functions properly, observe the inlet adapter through the set screw hole in the shutoff body. If a full thread is visible, drill a slight recess for the set screw (A) (with a 3/16 drill bit). Apply Loctite 222 or equivalent to the set screw and install and tighten.