



INSTALLATION AND OPERATING INSTRUCTIONS STYLE 0637 MOUNTING BRACKET

Mounting: Use four $\frac{5}{16}$ " bolts with flat washers, lock washers and locking nuts (user supplied).

Position the Style 637 on a horizontal mounting surface with the Style 627 4-Way Hydrant Valve in place to check clearances. Mark four holes and drill with an $\frac{1}{32}$ " drill.

Note: The Style 627 can be placed in the mount one of two ways.

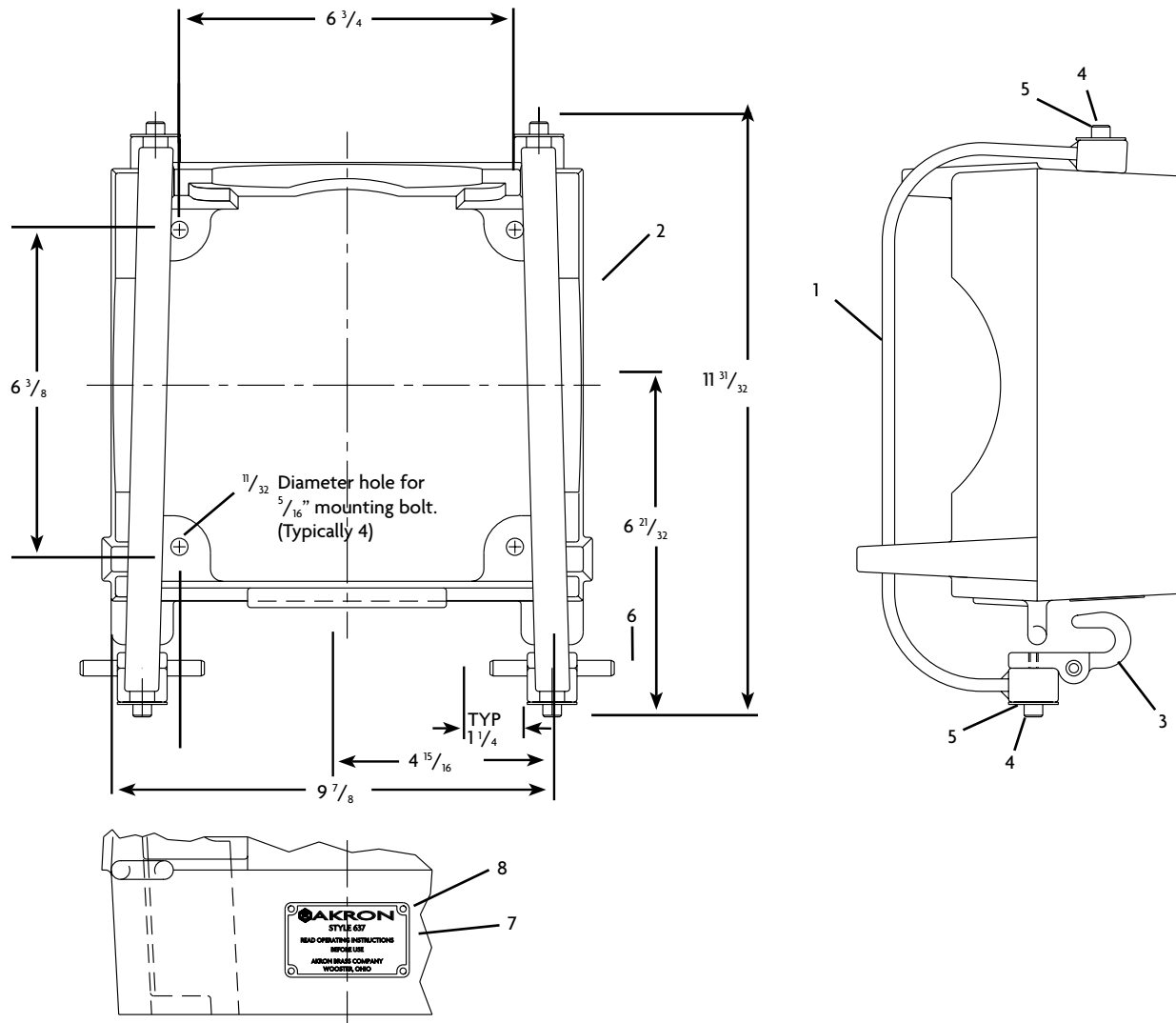
1. Flat with the handle up.
2. With a pre-connected hose up and the handle to one side.

If the unit is carried in the tipped position and has storz fittings, the Style 637 will have to be raised on blocks on each bolt in order to clear the mounting surface and cradle in the mount properly. Aluminum or hardwood blocks recommended (user supplied).

Once the Style 637 is secured to a mounting surface, the hooks and straps are released. The Style 627 is placed in the mount and the hooks and straps are pulled upward over the Style 627 one at a time. The hooks are engaged in their loops. Do not cross straps.

⚠ CAUTION: Ensure both straps are wrapped over top of the Style 627, and securely hooked into the bracket. Failure to do so may cause the Style 627 to fall off the vehicle while the vehicle is in motion.

⚠ CAUTION: Inspect the rubber straps monthly for signs of cracking when stretched. Replace cracked straps.



ITEM NO.	DESCRIPTION	PART NUMBER	QUANTITY
1	Rubber Straps	769616	2
2	Main Bracket	117158	1
3	Hook	117159	2
4	Screw Hex Hd Cap	761064	4
5	Washer	784132	4
6	Roll Pin	741061	2
7	I.D. Tag	773313	1
8	Nail Grip	736045	4