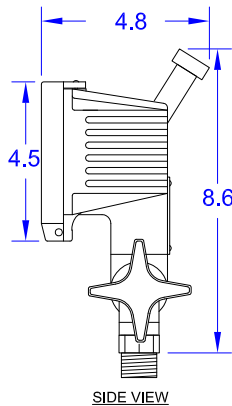
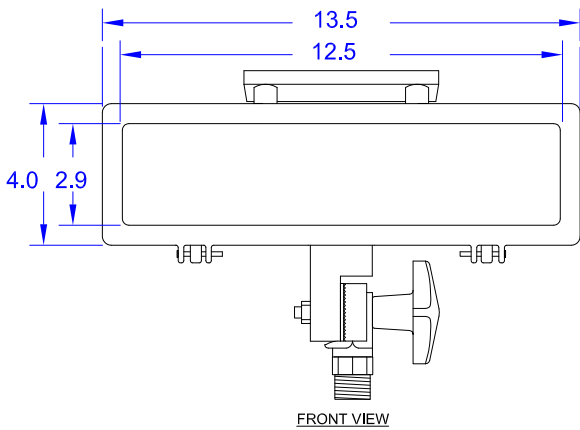
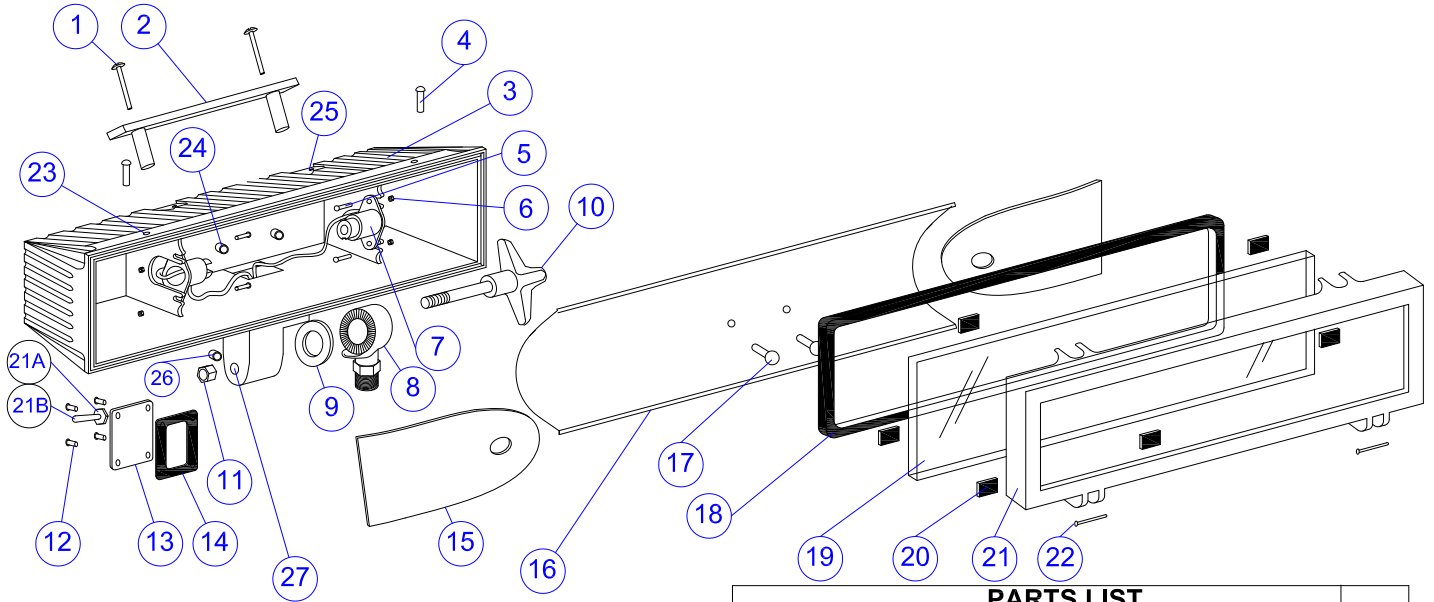


EXTENDA-LITE BETA 4000
150 WATT/12 V DC, 150 W, 300 W, 500 W, 650 W, AND 750 W



PARTS LIST

NO.	ASSY. NO.	PART NO.	DESCRIPTION	QTY.	
1	300-SH	317-HS	HANDLE SCREW	2	
2		301-SH		HANDLE	1
3		350-HS	BETA LIGHT HOUSING	1	
4		356-LS	LENS FRAME SCREW	2	
5		352-SC	SCREW	4	
6		425-JB	NUT	4	
7	411-HS	354-SA	SOCKET ASSEMBLY	1	
8		310-HS		HOUSING ARM, 3/4"	1
9		312-NS		NYLON WASHER	1
10		KBT-40		KNOB ASSEMBLY	1
11		321-LN	KNOB ASSEMBLY NUT	1	
12		354-SC	COVER SCREW	4	
13		400-CP	COVER PLATE	1	
14		400-CPG	COVER PLATE GASKET	1	
15		117-SF	SIDE REFLECTOR	2	
16		116-RF	REAR REFLECTOR	1	
17		358-RS	REFLECTOR SCREW	2	
18		400-LG	LENS GASKET	1	
19		350-LN	TEMPERED GLASS LENS	1	
20		400-LC	LENS CUSHION	6	
21		351-LF	LENS FRAME	1	
22		350-SR	LENS FRAME RIVET	2	
23		123-SS	LENS THD. INSERT	2	
24		123-SS	REFLECTOR THD.INSERT	2	
25		128-SS	HANDLE THD. INSERT	2	
26		122-SS	COVER PLATE INSERT	4	
27		121-SS	HOUSING THD. INSERT	1	
21A	SW-110/220	344-SW	SWITCH	1	
21B		345-SB		RUBBER BOOT COVER	1

} THESE PARTS SOLD AS ASSEMBLIES

****NOTE: 354-SA SOCKET ASSEMBLY CONSISTS OF 352-LS (WHITE SOCKET) AND 353-LS (BLACK SOCKET).**

ISO-9001 CERTIFIED

Akron Brass Company
A Premier Farnell Company

501 N. Cummings Lane, Washington, IL 61571
Phone: (309)444-4440 Fax: (309)444-8766