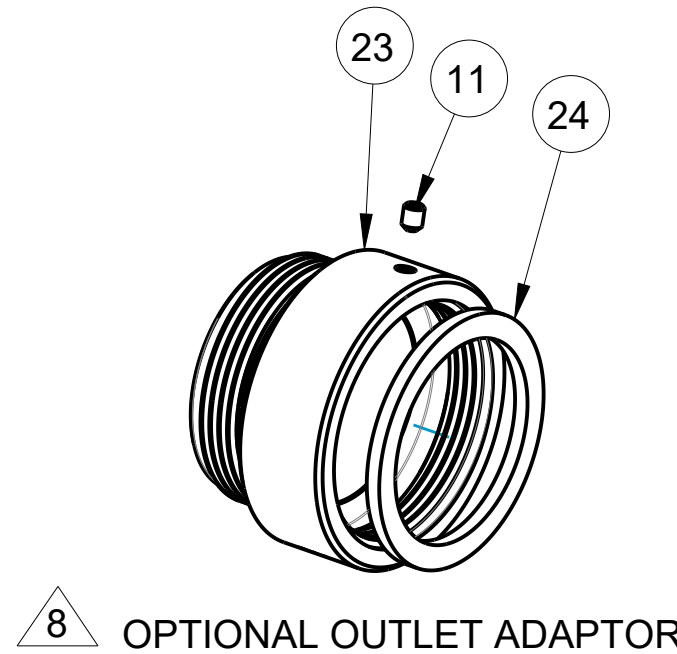
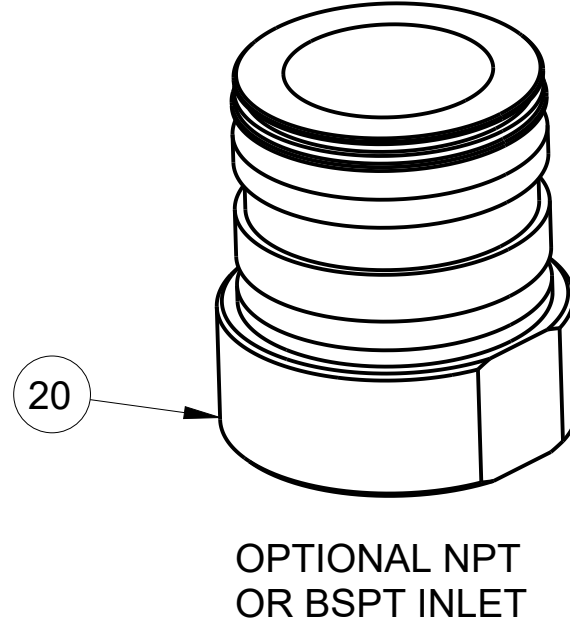


- ASSEMBLY NOTES:
- USE PARKER O-LUBE ON ALL O-RINGS AND MATING SURFACES UNLESS OTHERWISE NOTED.
- 1 USE PERMABOND LM113 OR LOCTITE 222.
  - 2 USE PERMABOND LH050 OR LOCTITE 592.
  - 3 USE LOW-TEMP LUBRIPLATE.
  - 6 USE PRIMER T AND PERMABOND HH120 OR LOCTITE 277.
  - 7 ALIGN BALL IN HOLE. TIGHTEN PLUG UNTIL TOUCHES BALL. THEN BACK OUT PLUG 1/4-1/2 TURN.
  - 8 AS SPECIFIED.
  - 9 THOROUGHLY CLEAN THREADS OF PLUG AND MATING PART AND APPLY LOCTITE 425.
  - 10 USE PERMABOND 737.



8 OPTIONAL OUTLET ADAPTOR



OPTIONAL NPT OR BSPT INLET



TECHNICAL SERVICE PARTS

STYLE 3430

PRODUCT GLOBAL MANUAL MONITOR

IF AN ITEM IS NOTED AS "NOT FIELD REPAIRABLE", OR YOU WISH TO RETURN AN ITEM TO AKRON BRASS FOR SERVICE PLEASE GO ONLINE TO, **ONLINEREPAIR.AKRONBRASS.COM**

Chg.	Date
11	7-17
12	02-20

Find		Description	Item	QTY
1	A,B	BALL BRASS 3/8"DIA	-	126
2		FITTING GREASE 3/16	713191	2
3		HANDLE FLEX GRIP 1"	718071	2
4		NAIL	736052	4
5	C,D	SCREW SOCKET HEAD CAP 5/16-18 x 7/8"	767048	2
6		ROLL PIN	744477	1
7	B	O-RING 2-237	757081	2
8	B	PLUG	742112	8
9		SNAP RING	758304	1
10	C,D	HANDLE TEE	721563	2
11		SCREW SOCKET HEAD CUP POINT SET 1/4 -20 X 1/4"	765002	2**
12	D	SHAFT ROTATION BRAKE	770498	1
13		SHOE BRAKE	769817	1
14		GAUGE PRESSURE 0-2.5 Mpa / 0-25 bar	718323	1
14		GAUGE PRESSURE 0-2500 Kpa / 0-300 PSI	718322	1
15		SHAPER STREAM	770464	1
17	C	SHAFT ELEVATION BRAKE	770355	1
18		BAR 2 HANDED TILLER	703880	1
19		PLATE ID	742191	1
20		INLET BASE DN80	122390	1
20		INLET BASE 3"	122391	1
20		INLET BASE 4"	123239	1
20		INLET BASE DN100	123240	1
20		INLET BASE 3" RAISED FACE	122915	1
20		INLET BASE 4" RAISED FACE	123241	1
20		INLET BASE 2.5" NPT	123954	1
20		INLET BASE 3.0" NPT	123956	1
20		INLET BASE 2.5" BSPT	123955	1
20		INLET BASE 3" BSPT	123957	1
21		ELBOW OUTLET 2.5" NH	122392	1
22		GOOSENECK	122389	1
23		OUTLET ADAPTER 2.5" BSP	104359	1
24		ADAPTOR GASKET	717043	1
30		1/8 NPT PLUG	744009	1
A		KIT OF 50 BALLS Ø 3/8"	109342	
B		SEAL KIT	94380001	
C		ELEVATION BRAKE SHAFT ASSEMBLY	34300035	
D		ROTATION BRAKE SHAFT ASSEMBLY	35260086	

\*\* 3 REQUIRED IF ITEM 23 IS SPECIFIED

PHONE: 330.264.5678 or 800.228.1161 | FAX: 330.264.2944 or 800.531.7335 | [www.akronbrass.com](http://www.akronbrass.com)

WARRANTY AND DISCLAIMER\*: We warrant Akron Brass products for a period of five (5) years\* after purchase against defects in materials or workmanship. Akron Brass will repair or replace product which fails to satisfy this warranty. Repair or replacement shall be at the discretion of Akron Brass. Products must be promptly returned to Akron Brass for warranty service. We will not be responsible for: wear and tear; any improper installation, use, maintenance or storage; negligence of the owner or user; repair or modification after delivery; failure to follow our instructions or recommendations; or anything else beyond our control. WE MAKE NO WARRANTIES, EXPRESS OR IMPLIED, OTHER THAN THOSE INCLUDED IN THIS WARRANTY STATEMENT, AND WE DISCLAIM ANY IMPLIED WARRANTY OF MERCHANTABILITY OR FITNESS FOR ANY PARTICULAR PURPOSE. Further, we will not be responsible for any consequential, incidental or indirect damages (including, but not limited to, any loss of profits) from any cause whatsoever. No person has authority to change this warranty. \*Unless otherwise provided herein. Akron Brass industrial electronic components & the Severe-Duty Monitor have a one (1) year warranty. Select Akron Brass handline nozzles and valves carry a ten (10) year warranty. Scene Star Lights carry a (6) year warranty. Weldon products have a two (2) year warranty from date of manufacture (excluding consumable components). Select Weldon LED products carry a five (5) year warranty. Honda products have the manufacturers' warranty and Akron Brass disclaims any warranty in respect of those products.

© 2016 Akron Brass Company. All rights reserved. No portion of this can be reproduced without the express written consent of the Akron Brass Company.

Parts List Sheet:

122495