

This product is no longer in production.
Please contact customer service.

STYLE 3420 and 3422
Apollo™ Monitor
With integral ground base/siamese
manufactured after 9-1-86

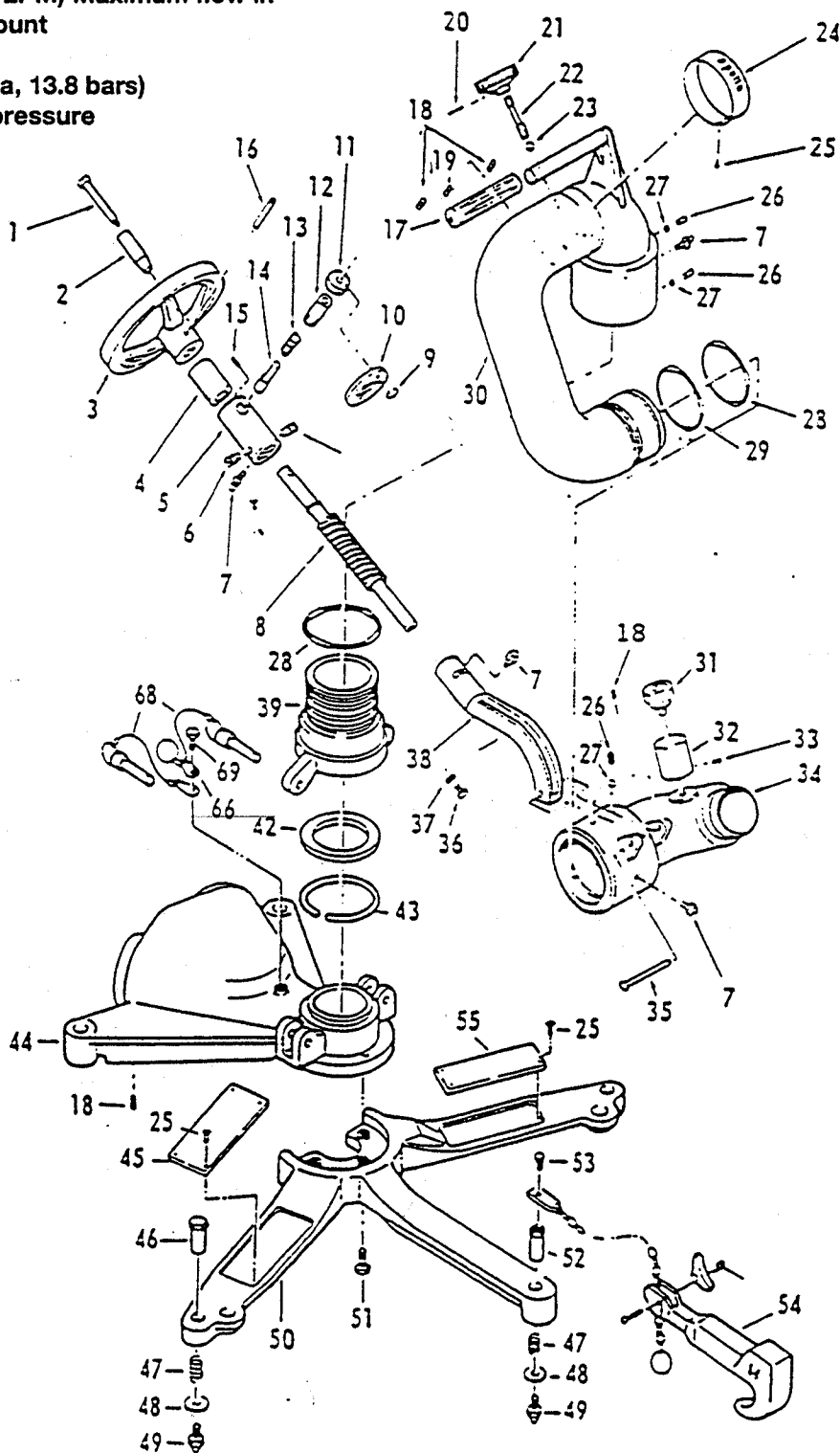
TECHNICAL SERVICE PARTS LIST

800 GPM (3030 LPM) Maximum flow in
portable base

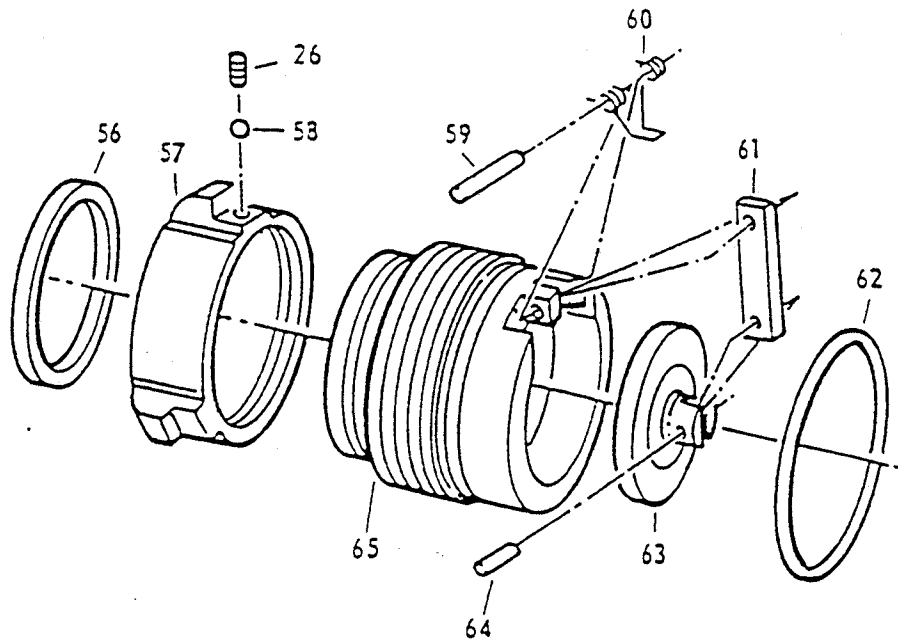
1200 GPM (4545 LPM) Maximum flow in
direct mount

200 PSI (1380 kpa, 13.8 bars)
Maximum pressure

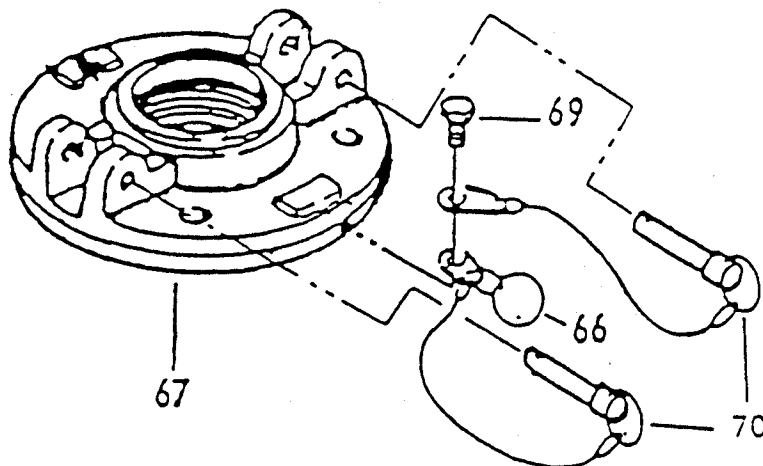
These units are no longer in production.
Contact Customer Service for parts
availability before ordering.



TECHNICAL SERVICE PARTS



CLAPPER ASSEMBLY



FLANGE MOUNT ASSEMBLY



AKRON®
FIRE-FIGHTING EQUIPMENT

STYLE 3420 and 3422
Apollo™ Monitor
With integral ground base/siamese
manufactured after 9-1-86

TECHNICAL SERVICE PARTS LIST

| ITEM NO. | DESCRIPTION | PART NUMBER | QUANTITY | |
|----------|---|-------------|----------|------|
| | | | 3420 | 3422 |
| 1 | Handwheel Pin | 7-44-220 | 1 | 1 |
| 2 | Handwheel Bushing | 7-21-204 | 1 | 1 |
| 3 | Handwheel | 109016 | 1 | 1 |
| 4 | Stop Sleeve | 7-69-138 | 1 | 1 |
| 5 | Adjustment Nut | 109178 | 1 | 1 |
| 6 | Cam Adjuster | 104357 | 2 | 2 |
| 7 | Zerk Grease Fitting | 7-13-036 | 4 | 4 |
| 8 | Adjustment Screw | 104396 | 1 | 1 |
| 9 | Key Ring | 7-58-142 | 1 | 1 |
| 10 | Warning Tag (Plunger Pin) | 7-73-210 | 1 | 1 |
| 11 | Plunger Handwheel | 101701 | 1 | 1 |
| 12 | Plunger Housing | 109207 | 1 | 1 |
| 13 | Plunger Spring | 7-68-150 | 1 | 1 |
| 14 | Plunger Pin | 7-41-043 | 1 | 1 |
| 15 | Socket Head Set Screw | 7-65-025 | 1 | 1 |
| 16 | Roll Pin | 7-44-076 | 1 | 1 |
| 17 | Handle Grip | 7-18-001 | 1 | 1 |
| 18 | Socket Head Set Screw | 7-65-108 | 3 | 3 |
| 19 | Socket Head Set Screw | 7-65-002 | 1 | 1 |
| 20 | Roll Pin | 7-44-066 | 1 | 1 |
| 21 | Brake Knob | 109189 | 1 | 1 |
| 22 | Brake Shaft | 7-70-219 | 1 | 1 |
| 23 | Brake Ball | 7-03-211 | 1 | 1 |
| 24 | Identification Band | 7-44-269 | 1 | 1 |
| 25 | Drive Screw | 7-36-045 | 16 | 16 |
| 26 | Swivel Plug | 7-42-023 | 4 | 4 |
| 27 | Ball Bearings | ** | 188 | 188 |
| 28 | O-Ring | 7-57-035 | 2 | 2 |
| 29 | O-Ring | 7-57-149 | 1 | 1 |
| 30 | Gooseneck | 104348 | 1 | 1 |
| 31 | Gauge | 7-18-132 | 1 | 1 |
| 32 | Gauge Guard | 7-18-156 | 1 | 1 |
| 33 | Self-Tapping Screw | 7-67-091 | 3 | 3 |
| 34 | Outlet Elbow | 115847 | 1 | 1 |
| 35 | Elevation Pin | 7-44-204 | 1 | 1 |
| 36 | Hex Head Cap Screw | 7-65-094 | 1 | 1 |
| 37 | Thrust Washer | 7-84-051 | 2 | 2 |
| 38 | Elevation Arm | 115838 | 1 | 1 |
| 39 | Inlet Connector | 115952 | 1 | 1 |
| 40 | Item # not used | | | |
| 41 | Item # not used | | | |
| 42 | Vee Gasket | 7-14-173 | 1 | 1 |
| 43 | Retaining Ring | 7-58-148 | 1 | 1 |
| 44 | Siamese Inlet | 104410 | 1 | 1 |
| 45 | Warning Tag (Tip Pressure) | 7-44-157 | 1 | 1 |
| 46 | Drive Sleeve | 7-69-302 | 4 | 4 |
| 47 | Drive Spring | 7-68-191 | 5 | 5 |
| 48 | Flat Washer | 7-84-068 | 5 | 5 |
| 49 | Ground Spike | 7-06-265 | 5 | 5 |
| 50 | Ground Base | 106251 | 1 | 1 |
| 51 | Hex Head Cap Screw | 7-65-107 | 3 | 3 |
| 52 | Drive Sleeve (Safety Chain) | 7-69-303 | 1 | 1 |
| 53 | Hex Head Cap Screw | 7-61-065 | 1 | 1 |
| 54 | Safety Chain Sub-Assembly (Parts not sold separately) | 3420-0008 | 1 | 1 |



AKRON®
FIRE-FIGHTING EQUIPMENT

STYLE 3420 and 3422
Apollo™ Monitor

With integral ground base/siamese
manufactured after 9-1-86

TECHNICAL SERVICE PARTS LIST

| ITEM NO. | DESCRIPTION | PART NUMBER | QUANTITY | |
|----------|---------------------------------------|-------------|----------|------|
| | | | 3420 | 3422 |
| 55 | Warning Tag (Safety Chain) | 7-44-212 | 1 | 1 |
| 56 | Swivel Gasket—2-1/2" | 7-14-043 | 2 | 2 |
| 56 | Swivel Gasket—3" | 7-14-022 | 2 | 2 |
| 57 | Swivel—2-1/2" (NH)* | 101420 | 2 | 2 |
| 57 | Swivel—3" (NH)* | 104013 | 2 | 2 |
| 58 | Ball Bearings—2-1/2" Swivel | " | 76 | 76 |
| 58 | Ball Bearings—3" Swivel | " | 94 | 94 |
| 59 | Roll Pin | 7-44-211 | 2 | 2 |
| 60 | Clapper Spring | 7-68-196 | 2 | 2 |
| 61 | Clapper Bar | 104402 | 2 | 2 |
| 62 | O-Ring | 7-57-222 | 2 | 2 |
| 63 | Clapper Plate (Roll Pin #64 Required) | 104403 | 2 | 2 |
| 64 | Roll Pin | 7-44-056 | 2 | 2 |
| 65 | Clapper Housing—2-1/2" | 104407 | 2 | 2 |
| 65 | Clapper Housing—3" | 104408 | 2 | 2 |
| 59-65 | Clapper Assembly—2-1/2" | 3420-0017 | 2 | 2 |
| 59-65 | Clapper Assembly—3" | 3420-0018 | 2 | 2 |
| 66 | Warning Tag (Lock Pins) | 7-73-135 | 1 | 2 |
| 67 | Flange Mount (3" 150#) | 104337 | | 1 |
| 68 | Lock Pin w/Lanyard | 109023 | 2 | 2 |
| 69 | Hex Head Cap Screw | 7-61-066 | 1 | 2 |
| 66-69 | Flange Mount Assembly | 34050006 | | 1 |
| 70 | Lock Pin w/Lanyard | 109258 | | 2 |

†For other threads order by description and thread size (ODM and TPI) or by Akron Thread Code.

**Packet of 50 Locking Balls - P/N 109041.

Optional Discharge Pipe and Quad Stacked Tips (not shown)

QUAD STACKED TIPS (Style 2499—1-3/8", 1-1/2", 1-3/4", 2" Pyrolite®)

| | |
|--|----------|
| Top Tip—1-3/8" Discharge Tip x 1-1/2" NH | 104186 |
| Top Tip Gasket | 7-14-124 |
| Middle Tip—1-1/2" Discharge Tip x 1-1/2" Underwriters Thread | 104185 |
| 1-1/2" Tip Gasket | 7-14-121 |
| Middle Tip—1-3/4" Discharge Tip x 2" NH | 104184 |
| 1-3/4" Tip Gasket | 7-14-013 |
| Bottom Tip—2" Discharge Tip x 2-1/2" NH | 104149 |
| Bottom Tip Gasket | 7-14-019 |

DISCHARGE PIPE (Style 3488—2-1/2" NH x 2-1/2" NH Pyrolite®)

| | |
|----------------|----------|
| Top Adapter | 101581 |
| Pipe | 104615 |
| Bottom Adapter | 101580 |
| I. D. Band | 7-03-199 |
| Gasket | 7-14-021 |

To ensure continued quality performance, use only AKRON replacement parts.

In the U.S. - Phone: (800) 228-1161 • Fax: (800) 531-7335



AKRON BRASS
A PREMIER FARNELL Company
An ISO 9001 Registered Company

U.S./INTERNATIONAL
AKRON BRASS COMPANY
P.O. Box 86, Wooster, Ohio 44691
(330) 264-5678
FAX # (330) 264-2944

Available in CANADA through
AKRON MANUFACTURING COMPANY
P.O. Box 280, Aylmer, Ontario, N5H 2R9
(519) 773-8431
FAX # (519) 773-3794

Home-page: www.akronbrass.com; E-mail: custserv@akronbrass.com

® Registered Trademark of Premier Farnell Corp.

™ Trademark of Premier Farnell Corp.

WARRANTY AND DISCLAIMER: We warrant Akron Brass products for a period of five (5) years after purchase against defects in materials or workmanship. Akron Brass will repair or replace product which fails to satisfy this warranty. Repair or replacement shall be at the discretion of Akron Brass. Products must be promptly returned to Akron Brass for warranty service.

We will not be responsible for: wear and tear; any improper installation, use, maintenance or storage; negligence of the owner or user; repair or modification after delivery; damage; failure to follow our instructions or recommendations; or anything else beyond our control. **WE MAKE NO WARRANTIES, EXPRESS OR IMPLIED, OTHER THAN THOSE INCLUDED IN THIS WARRANTY STATEMENT, AND WE DISCLAIM ANY IMPLIED WARRANTY OF MERCHANTABILITY OR FITNESS FOR ANY PARTICULAR PURPOSE.** Further, we will not be responsible for any consequential, incidental or indirect damages (including, but not limited to, any loss of profits) from any cause whatsoever. No person has authority to change this warranty.

AB-228 (REV. 12/98) PRINTED IN U.S.A.
ORR. PRINTING -

© Copyright 1998 by Premier Farnell Corp.

All rights reserved. No portion of this publication, whether in whole or in part, can be reproduced without the express written consent of Premier Farnell Corp.