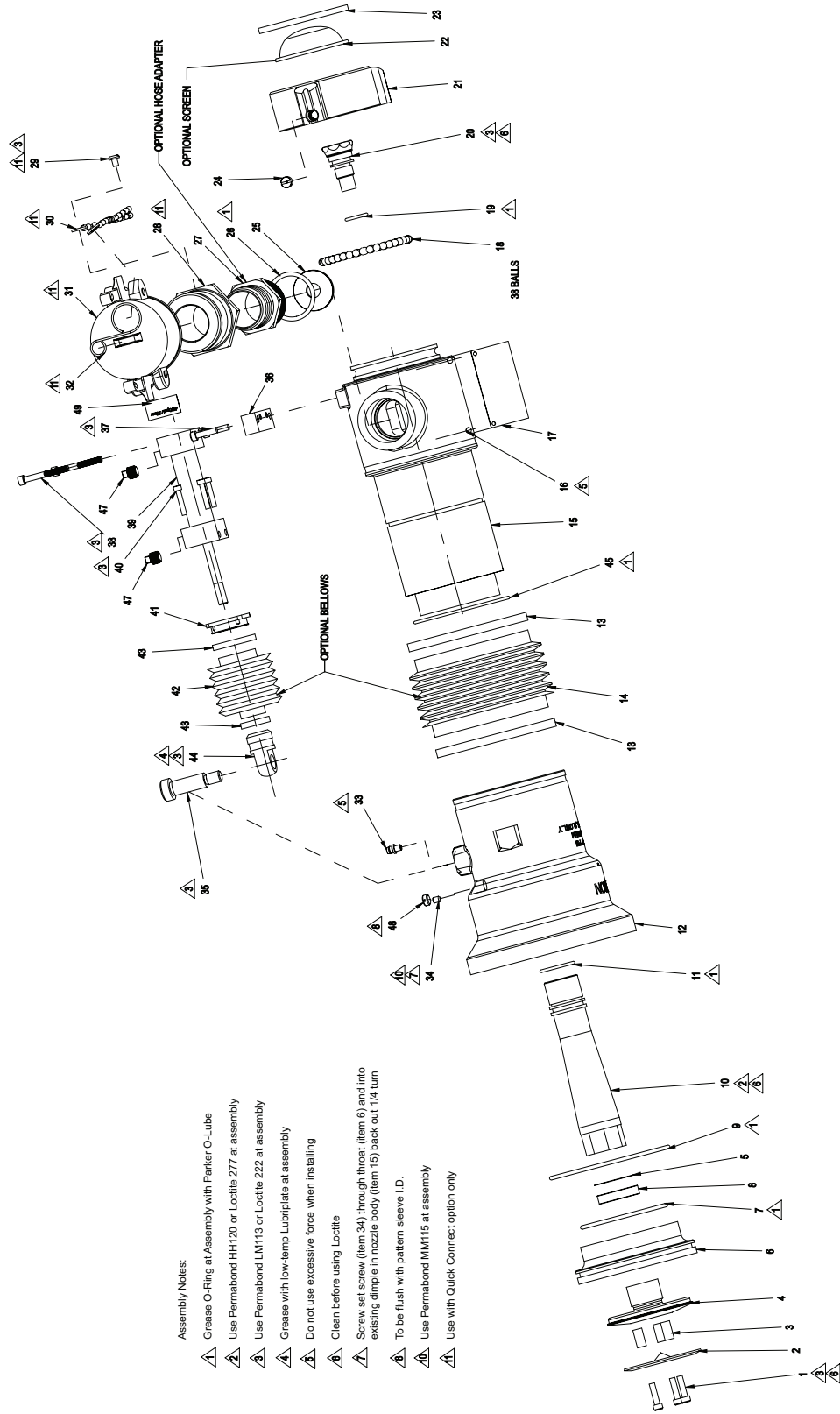


TECHNICAL SERVICE PARTS



Assembly Notes:

- ▲ Grease O-Ring at Assembly with Parker O-Lube
- ▲ Use PermaBond HH120 or Loctite 277 at assembly
- ▲ Use PermaBond LM113 or Loctite 222 at assembly
- ▲ Grease with low-temp Lubriplate at assembly
- ▲ Do not use excessive force when installing
- ▲ Clean before using Loctite
- ▲ Screw set screw (item 34) through thread (item 6) and into existing dimple in nozzle body (item 15) back out 1/4 turn
- ▲ To be flush with pattern sleeve I.D.
- ▲ Use PermaBond MM115 at assembly
- ▲ Use with Quick Connect option only

ITEM NO.	DESCRIPTION	PART NUMBER	QUANTITY
1	SCREW	767041	3
2	PLATE DEFLECTOR STAMPED	745296	1
3	SPACE DEFLECTOR	770490	3
4	BAFFLE HEAD	119400	1
5	SHIM	768348	1
6	THROAT SLEEVE	119397	1
7	O-RING 2-233	757065	1
8	SPACER 500 GPM	127700	1
9	O-RING 2-242	757251	1
10	STEM	119401	1
11	O-RING 2-121	757092	1
12	PATTERN SLEEVE	122302	1
13*	WRAP TIE	785028	2
14*	BELLOW	704959	1
15	NOZZLE BODY	122303	1
16	NAIL GRIP	736054	4
17	ID PLATE	745297	1
18	BRASS BALLS	-	39
19	O-RING 2-114	757002	1
20	BLENDING TUBE	772194	1
21	SWIVEL 2½" NH	101325	1
23	GASKET	717043	1
24	SWIVEL PLUG	742023	1
25	ORFICE	739079	1
26	O-RING 2-221	757227	1
27*	HOSE BARB CONNECTOR	707161	1
28*	CAM CONNECTOR	120682	1
29*	SCREW	765104	1

ITEM NO.	DESCRIPTION	PART NUMBER	QUANTITY
30*	CHAIN	706225	1
31*	CONNECTOR COVER	707494	1
32*	HOOK CLIP	707070	1
33	FITTING	713191	1
34	SCREW	767088	1
35	SCREW	767158	1
36	ADPT HYDRAULIC CYLINDER	702158	1
37	SCREW	767086	2
38	SCREW	763035	2
39	CYLINDER HYDRAULIC	707552	1
40*	SCREW	765274	4
41*	ADPT BELLOWS	702159	1
42*	BELLOWS ACTUATOR	704960	1
43*	WRAP TY BLACK 8"	785024	2
44	EYELET	710142	1
45	O-RING 2-152	757149	1
47	PIPE PLUG	744986	2
48	PLUG	744394	1
49	LABEL	729521	1
62	FITTING	713199	2
103*	KIT NEEDLE VLV W/FITTINGS	44720003	1

* Optional